



ELECTRONIC COPY

LG757534816
Report verification at igi.org



January 10, 2026

IGI Report Number **LG757534816**

Description **LABORATORY GROWN DIAMOND**

Shape and Cutting Style **ROUND BRILLIANT**

Measurements **10.62 - 10.67 X 6.54 MM**

GRADING RESULTS

Carat Weight **4.59 CARATS**

Color Grade **D**

Clarity Grade **VS 1**

Cut Grade **IDEAL**

January 10, 2026
IGI Report Number **LG757534816**
Description **LABORATORY GROWN DIAMOND**
Shape and Cutting Style **ROUND BRILLIANT**
Measurements **10.62 - 10.67 X 6.54 MM**

GRADING RESULTS

Carat Weight **4.59 CARATS**

Color Grade **D**

Clarity Grade **VS 1**

Cut Grade **IDEAL**

ADDITIONAL GRADING INFORMATION

Polish **EXCELLENT**

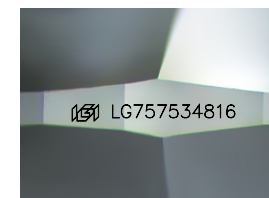
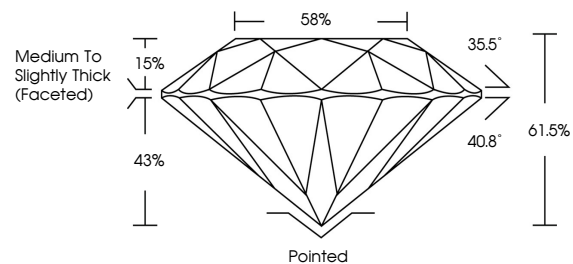
Symmetry **EXCELLENT**

Fluorescence **NONE**

Inscription(s) **IGI LG757534816**

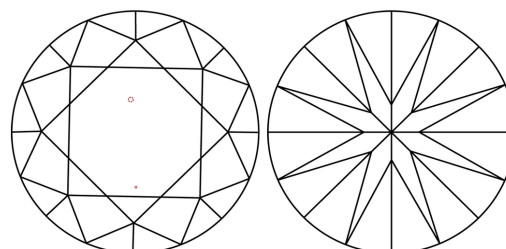
Comments: This Laboratory Grown Diamond was created by Chemical Vapor Deposition (CVD) growth process. Type IIa

PROPORTIONS



Sample Image Used

CLARITY CHARACTERISTICS



KEY TO SYMBOLS

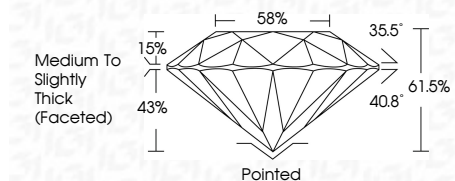
Red symbols indicate internal characteristics.
Green symbols indicate external characteristics.

COLOR

D E F G H I J Faint Very Light Light

CLARITY

FL	IF	VS ¹⁻²	VS ¹⁻²	SI ¹⁻²	I ¹⁻³
Flawless	Internally Flawless	Very Very Slightly Included	Very Slightly Included	Slightly Included	Included



ADDITIONAL GRADING INFORMATION

Polish **EXCELLENT**

Symmetry **EXCELLENT**

Fluorescence **NONE**

Inscription(s) **IGI LG757534816**

Comments: This Laboratory Grown Diamond was created by Chemical Vapor Deposition (CVD) growth process. Type IIa



IGI



January 10, 2026	IGI Report No LG757534816	4.59 CARATS	D
ROUND BRILLIANT	10.62 - 10.67 X 6.54 MM	VS 1	IDEAL
Carat Weight	Color Grade	Clarity Grade	Cut Grade
4.59	D	VS 1	IDEAL
10.62 - 10.67 X 6.54	61.05%	58%	Medium To Slightly Thick (Faceted)
Pointed	EXCELLENT	EXCELLENT	NONE
IGI LG757534816	Comments: This Laboratory Grown Diamond was created by Chemical Vapor Deposition (CVD) growth process. Type IIa		