



ELECTRONIC COPY

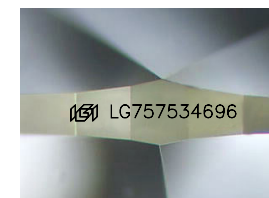
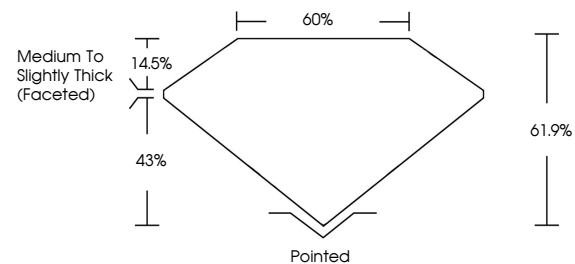
LG757534696
Report verification at igi.org



January 9, 2026
IGI Report Number **LG757534696**
Description **LABORATORY GROWN DIAMOND**
Shape and Cutting Style **OVAL BRILLIANT**
Measurements **16.70 X 10.94 X 6.77 MM**
GRADING RESULTS
Carat Weight **8.10 CARATS**
Color Grade **E**
Clarity Grade **VVS 2**

January 9, 2026
IGI Report Number **LG757534696**
Description **LABORATORY GROWN DIAMOND**
Shape and Cutting Style **OVAL BRILLIANT**
Measurements **16.70 X 10.94 X 6.77 MM**

PROPORTIONS

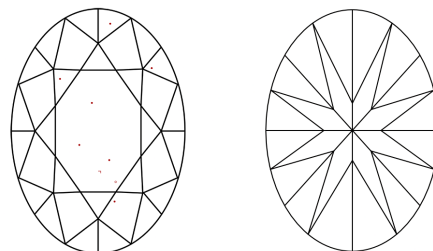


Sample Image Used

GRADING RESULTS

Carat Weight **8.10 CARATS**
Color Grade **E**
Clarity Grade **VVS 2**

CLARITY CHARACTERISTICS



KEY TO SYMBOLS

Red symbols indicate internal characteristics.
Green symbols indicate external characteristics.

ADDITIONAL GRADING INFORMATION

Polish **EXCELLENT**
Symmetry **EXCELLENT**
Fluorescence **NONE**
Inscription(s) **IGI LG757534696**

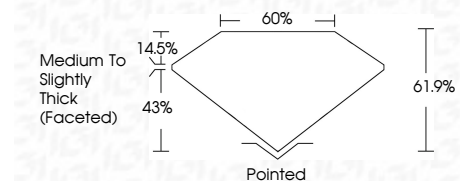
Comments: This Laboratory Grown Diamond was created by Chemical Vapor Deposition (CVD) growth process. Type IIa

COLOR

D E F G H I J Faint Very Light Light

CLARITY

FL	IF	VVS ¹⁻²	VS ¹⁻²	SI ¹⁻²	I ¹⁻³
Flawless	Internally Flawless	Very Very Slightly Included	Very Slightly Included	Slightly Included	Included



ADDITIONAL GRADING INFORMATION

Polish **EXCELLENT**
Symmetry **EXCELLENT**
Fluorescence **NONE**
Inscription(s) **IGI LG757534696**
Comments: This Laboratory Grown Diamond was created by Chemical Vapor Deposition (CVD) growth process. Type IIa



IGI



January 9, 2026
IGI Report No LG757534696
OVAL BRILLIANT
16.70 X 10.94 X 6.77 MM
8.10 CARATS
Color Grade **E**
Clarity Grade **VVS 2**
Depth **61.9%**
Table **43%**
Girdle **Medium to Slightly Thick (Faceted)**
Culet **Pointed**
Polish **EXCELLENT**
Symmetry **EXCELLENT**
Fluorescence **NONE**
Inscription(s) **IGI LG757534696**
Comments: This Laboratory Grown Diamond was created by Chemical Vapor Deposition (CVD) growth process. Type IIa