

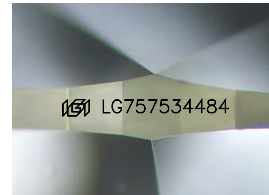
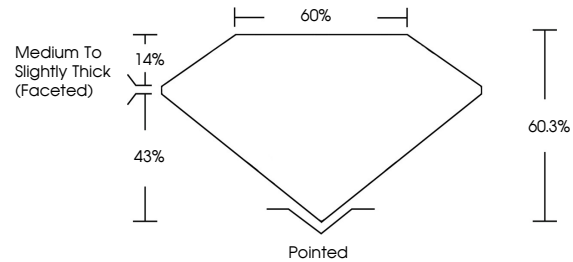


**INTERNATIONAL  
GEMOLOGICAL  
INSTITUTE**

**ELECTRONIC COPY**

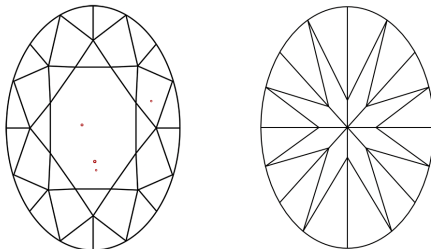
LG757534484  
Report verification at [igi.org](https://igi.org)

## PROPORTIONS



Sample Image Used

## CLARITY CHARACTERISTICS



## KEY TO SYMBOLS

Red symbols indicate internal characteristics.  
Green symbols indicate external characteristics.

## COLOR

D E F G H I J Faint Very Light Light

## CLARITY

FL	IF	VVS <sup>1-2</sup>	VS <sup>1-2</sup>	SI <sup>1-2</sup>	I <sup>1-3</sup>
Flawless	Internally Flawless	Very Very Slightly Included	Very Slightly Included	Slightly Included	Included

LABORATORY GROWN DIAMOND REPORT



January 9, 2026

IGI Report Number **LG757534484**Description **LABORATORY GROWN DIAMOND**Shape and Cutting Style **OVAL BRILLIANT**

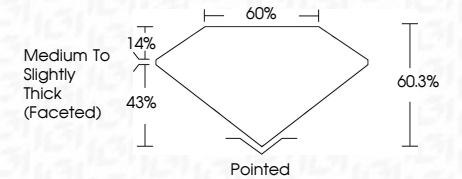
Measurements **16.26 X 10.24 X 6.17 MM**

## GRADING RESULTS

Carat Weight **6.59 CARATS**

Color Grade **E**

Clarity Grade VS 1



### ADDITIONAL GRADING INFORMATION

Polish **EXCELLENT**Symmetry **EXCELLENT**Fluorescence **NONE**Inscription(s)  LG757534484

Comments: This Laboratory Grown Diamond was created by Chemical Vapor Deposition (CVD) growth process.  
Type IIa



IGI

**www.igi.org**

© IGI 2020, International Gemological Institute

FD - 10 20



THIS DOCUMENT WAS PRODUCED WITH THE FOLLOWING SECURITY MEASURES: SPECIAL DOCUMENT PAPER, INK SCREENS, WATERMARK BACKGROUND DESIGNS, HOLOGRAM AND OTHER SECURITY FEATURES NOT LISTED AND DO EXCEED DOCUMENT SECURITY INDUSTRY GUIDELINES.

January 9, 2026  
IGI Report No LG757534484  
OVAL BRILLIANT

16.26 X 10.24 X 6.17 MM	6.59 CARATS	E
Carat Weight	VS 1	60.3%
Color Grade	60%	
Clarity Grade	Medium to Slightly Thick (Faceted)	
Depth	Pointed	
Table	EXCELLENT	
Girdle	EXCELLENT	
Culet	NONE	
Polish		
Symmetry		
Fluorescence		
Inscription(s)		691 LG75753484

**Comments:**  
This Laboratory Grown Diamond was created by Chemical Vapor Deposition (CVD) growth process.  
Type IIa