

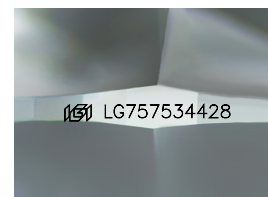
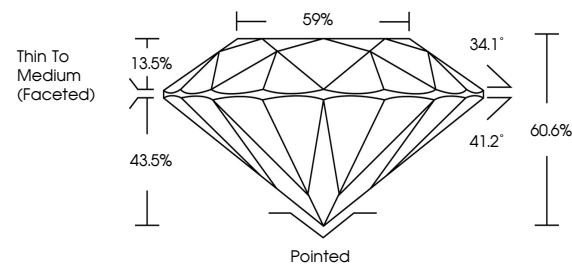


ELECTRONIC COPY

LABORATORY GROWN DIAMOND REPORT

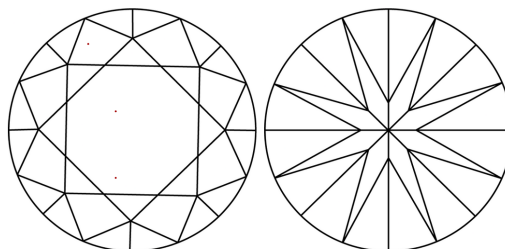
LG757534428
Report verification at igi.org

PROPORTIONS



Sample Image Used

CLARITY CHARACTERISTICS



KEY TO SYMBOLS

Red symbols indicate internal characteristics.
Green symbols indicate external characteristics.

COLOR

D E F G H I J Faint Very Light Light

CLARITY

FL	IF	VVS ¹⁻²	VS ¹⁻²	SI ¹⁻²	I ¹⁻³
Flawless	Internally Flawless	Very Very Slightly Included	Very Slightly Included	Slightly Included	Included

LABORATORY GROWN DIAMOND REPORT



January 9, 2026

IGI Report Number **LG757534428**Description **LABORATORY GROWN DIAMOND**Shape and Cutting Style **ROUND BRILLIANT**

Measurements 9.80 - 9.86 X 5.96 MM

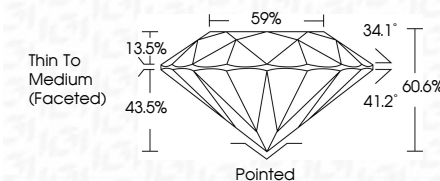
GRADING RESULTS

Carat Weight **3.53 CARATS**

Color Grade E

Clarity Grade **VVS 2**

Cut Grade **IDEAL**



ADDITIONAL GRADING INFORMATION

Polish **EXCELLENT**Symmetry **EXCELLENT**Fluorescence **NONE**Inscription(s) LG757534428

Comments: This Laboratory Grown Diamond was created by Chemical Vapor Deposition (CVD) growth process.
Type IIa



© IGI 2020, International Gemological Institute

FD - 10 20

www.igi.org

THIS DOCUMENT WAS PRODUCED WITH THE FOLLOWING SECURITY MEASURES: SPECIAL DOCUMENT PAPER, INK SCREENS, WATERMARK BACKGROUND DESIGNS, HOLOGRAM AND OTHER SECURITY FEATURES NOT LISTED AND DO EXCEED DOCUMENT SECURITY INDUSTRY GUIDELINES

January 9, 2026
GI Report No LG757534428
ROUND BRILLIANT

9.80 - 9.86 X 5.96 MM	Carat Weight	3.63 CARATS
	Color Grade	E
	Clarity Grade	VVS 2
	Cut Grade	IDEAL
	Depth	60.6%
	Table	59%
	Glide	Thin To Medium (faceted)
	Culet	Pointed
	Polish	EXCELLENT
	Symmetry	EXCELLENT
	Fluorescence	NONE

Comments:
This Laboratory Grown Diamond was
created by Chemical Vapor Deposition
(CVD) growth process.