



ELECTRONIC COPY

LG757533665
Report verification at igi.org



January 13, 2026

IGI Report Number **LG757533665**

Description **LABORATORY GROWN DIAMOND**

Shape and Cutting Style **ROUND BRILLIANT**

Measurements **11.02 - 11.08 X 6.61 MM**

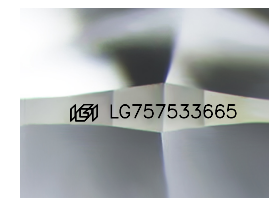
GRADING RESULTS

Carat Weight **5.02 CARATS**

Color Grade **F**

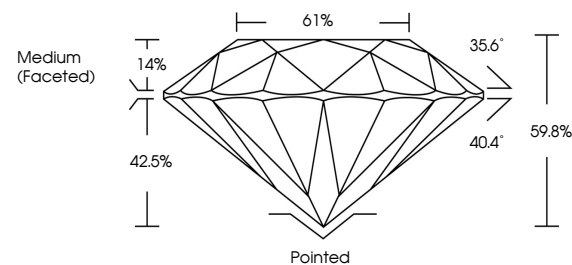
Clarity Grade **VVS 2**

Cut Grade **EXCELLENT**

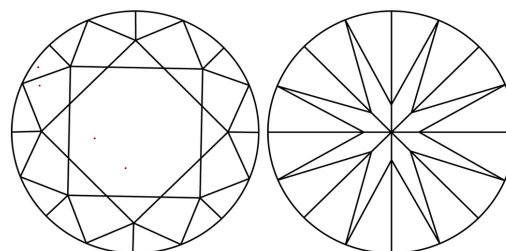


Sample Image Used

PROPORTIONS



CLARITY CHARACTERISTICS



KEY TO SYMBOLS

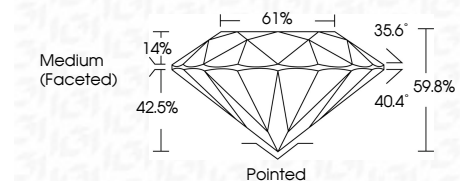
Red symbols indicate internal characteristics.
Green symbols indicate external characteristics.

COLOR

D E F G H I J Faint Very Light Light

CLARITY

FL	IF	VVS ¹⁻²	VS ¹⁻²	SI ¹⁻²	I ¹⁻³
Flawless	Internally Flawless	Very Very Slightly Included	Very Slightly Included	Slightly Included	Included



ADDITIONAL GRADING INFORMATION

Polish **EXCELLENT**

Symmetry **EXCELLENT**

Fluorescence **NONE**

Inscription(s) **IGI LG757533665**

Comments: This Laboratory Grown Diamond was created by Chemical Vapor Deposition (CVD) growth process. Type IIa



IGI



January 13, 2026
IGI Report No LG757533665
ROUND BRILLIANT

5.02 CARATS
F
VVS 2
EXCELLENT
59.8%
61%
Medium (Faceted)

Pointed
EXCELLENT
EXCELLENT
NONE
IGI LG757533665

Cutler
Polish
Symmetry
Fluorescence
Inscription(s)

Comments: This Laboratory Grown Diamond was created by Chemical Vapor Deposition (CVD) growth process. Type IIa