



ELECTRONIC COPY

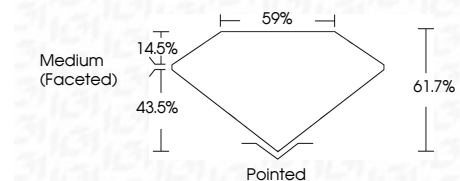
LG757533576
Report verification at igi.org



January 11, 2026
IGI Report Number **LG757533576**
Description **LABORATORY GROWN DIAMOND**
Shape and Cutting Style **ROUND MODIFIED BRILLIANT**
Measurements **9.92 - 9.94 X 6.13 MM**

GRADING RESULTS

Carat Weight **4.03 CARATS**
Color Grade **FANCY PINK**
Clarity Grade **VVS 2**



ADDITIONAL GRADING INFORMATION

Polish **EXCELLENT**
Symmetry **VERY GOOD**
Fluorescence **SLIGHT**
Inscription(s) **IGI LG757533576**
Comments: This Laboratory Grown Diamond was created by Chemical Vapor Deposition (CVD) growth process. Indications of post-growth treatment.



January 11, 2026
IGI Report No LG757533576
ROUND MODIFIED BRILLIANT
9.92 - 9.94 X 6.13 MM
4.03 CARATS
FANCY PINK
VVS 2
61.7%
59%
Medium (Faceted)
Pointed
EXCELLENT
VERY GOOD
SLIGHT
IGI LG757533576
Comments: This Laboratory Grown Diamond was created by Chemical Vapor Deposition (CVD) growth process. Indications of post-growth treatment.

January 11, 2026
IGI Report Number **LG757533576**
Description **LABORATORY GROWN DIAMOND**
Shape and Cutting Style **ROUND MODIFIED BRILLIANT**
Measurements **9.92 - 9.94 X 6.13 MM**

GRADING RESULTS

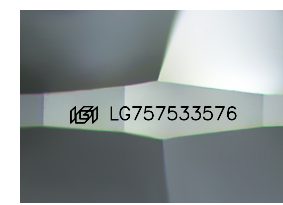
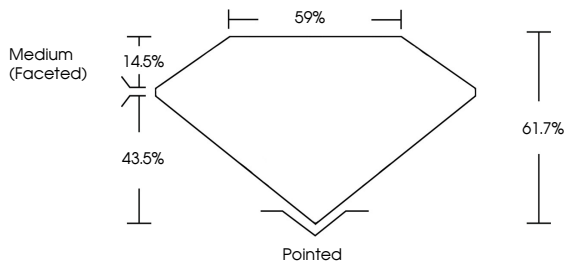
Carat Weight **4.03 CARATS**
Color Grade **FANCY PINK**
Clarity Grade **VVS 2**

ADDITIONAL GRADING INFORMATION

Polish **EXCELLENT**
Symmetry **VERY GOOD**
Fluorescence **SLIGHT**
Inscription(s) **IGI LG757533576**

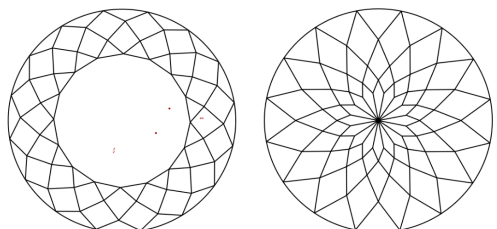
Comments: This Laboratory Grown Diamond was created by Chemical Vapor Deposition (CVD) growth process. Indications of post-growth treatment.

PROPORTIONS



Sample Image Used

CLARITY CHARACTERISTICS



KEY TO SYMBOLS

Red symbols indicate internal characteristics.
Green symbols indicate external characteristics.

COLOR

D E F G H I J Faint Very Light Light

CLARITY

FL	IF	VVS ¹⁻²	VS ¹⁻²	SI ¹⁻²	I ¹⁻³
Flawless	Internally Flawless	Very Very Slightly Included	Very Slightly Included	Slightly Included	Included

