



**ELECTRONIC COPY**

LG757532195  
Report verification at igi.org



January 9, 2026  
IGI Report Number **LG757532195**  
Description **LABORATORY GROWN DIAMOND**  
Shape and Cutting Style **CUSHION MODIFIED BRILLIANT**  
Measurements **12.61 X 8.80 X 5.88 MM**  
**GRADING RESULTS**  
Carat Weight **6.04 CARATS**  
Color Grade **FANCY VIVID YELLOW**  
Clarity Grade **VS 2**

January 9, 2026  
IGI Report Number **LG757532195**  
Description **LABORATORY GROWN DIAMOND**  
Shape and Cutting Style **CUSHION MODIFIED BRILLIANT**  
Measurements **12.61 X 8.80 X 5.88 MM**

**GRADING RESULTS**

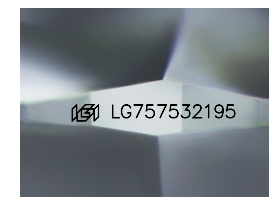
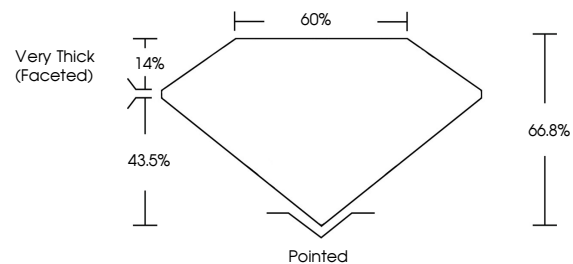
Carat Weight **6.04 CARATS**  
Color Grade **FANCY VIVID YELLOW**  
Clarity Grade **VS 2**

**ADDITIONAL GRADING INFORMATION**

Polish **EXCELLENT**  
Symmetry **EXCELLENT**  
Fluorescence **NONE**  
Inscription(s) **IGI LG757532195**

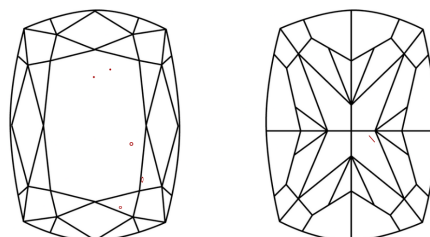
Comments: This Laboratory Grown Diamond was created by Chemical Vapor Deposition (CVD) growth process.

**PROPORTIONS**



Sample Image Used

**CLARITY CHARACTERISTICS**



**KEY TO SYMBOLS**

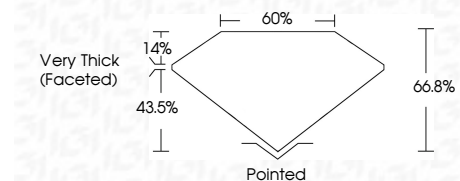
Red symbols indicate internal characteristics.  
Green symbols indicate external characteristics.

**COLOR**

D E F G H I J Faint Very Light Light

**CLARITY**

FL	IF	VS <sup>1-2</sup>	VS <sup>1-2</sup>	SI <sup>1-2</sup>	I <sup>1-3</sup>
Flawless	Internally Flawless	Very Very Slightly Included	Very Slightly Included	Slightly Included	Included



**ADDITIONAL GRADING INFORMATION**

Polish **EXCELLENT**  
Symmetry **EXCELLENT**  
Fluorescence **NONE**  
Inscription(s) **IGI LG757532195**  
Comments: This Laboratory Grown Diamond was created by Chemical Vapor Deposition (CVD) growth process.



January 9, 2026  
IGI Report No LG757532195  
CUSHION MODIFIED BRILLIANT  
6.04 CARATS  
Carat Weight  
FANCY VIVID YELLOW  
Color Grade  
VS 2  
Clarity Grade  
12.61 X 8.80 X 5.88 MM  
Depth  
66.8%  
Table  
60%  
Girdle  
Very Thick (Faceted)  
Pointed  
Culet  
EXCELLENT  
Polish  
EXCELLENT  
Symmetry  
EXCELLENT  
Fluorescence  
NONE  
Inscription(s)  
IGI LG757532195  
Comments: This Laboratory Grown Diamond was created by Chemical Vapor Deposition (CVD) growth process.