



ELECTRONIC COPY

LG757531256
Report verification at igi.org



January 5, 2026
IGI Report Number **LG757531256**
Description **LABORATORY GROWN DIAMOND**
Shape and Cutting Style **CUT CORNERED
RECTANGULAR MODIFIED
BRILLIANT**
Measurements **11.03 X 7.28 X 4.92 MM**
GRADING RESULTS
Carat Weight **3.61 CARATS**
Color Grade **FANCY INTENSE YELLOW**
Clarity Grade **SI 1**

LABORATORY GROWN DIAMOND REPORT

January 5, 2026
IGI Report Number **LG757531256**
Description **LABORATORY GROWN DIAMOND**
Shape and Cutting Style **CUT CORNERED RECTANGULAR
MODIFIED BRILLIANT**
Measurements **11.03 X 7.28 X 4.92 MM**

GRADING RESULTS

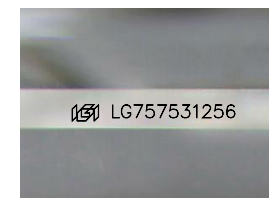
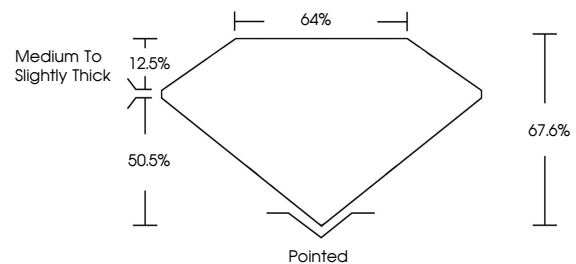
Carat Weight **3.61 CARATS**
Color Grade **FANCY INTENSE YELLOW**
Clarity Grade **SI 1**

ADDITIONAL GRADING INFORMATION

Polish **EXCELLENT**
Symmetry **EXCELLENT**
Fluorescence **NONE**
Inscription(s) **IGI LG757531256**

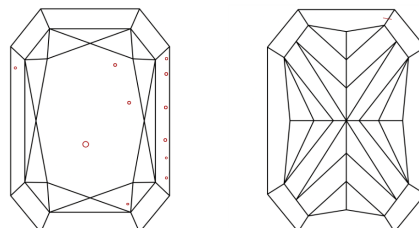
Comments: This Laboratory Grown Diamond was created by Chemical Vapor Deposition (CVD) growth process.

PROPORTIONS



Sample Image Used

CLARITY CHARACTERISTICS



KEY TO SYMBOLS

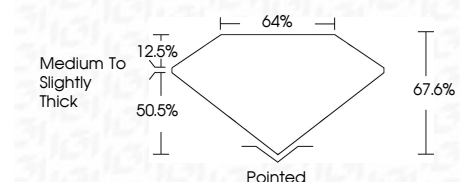
Red symbols indicate internal characteristics.
Green symbols indicate external characteristics.

COLOR

D E F G H I J Faint Very Light Light

CLARITY

| FL | IF | VS ¹⁻² | VS ¹⁻² | SI ¹⁻² | I ¹⁻³ |
|----------|---------------------|-----------------------------|------------------------|-------------------|------------------|
| Flawless | Internally Flawless | Very Very Slightly Included | Very Slightly Included | Slightly Included | Included |



ADDITIONAL GRADING INFORMATION

Polish **EXCELLENT**
Symmetry **EXCELLENT**
Fluorescence **NONE**
Inscription(s) **IGI LG757531256**
Comments: This Laboratory Grown Diamond was created by Chemical Vapor Deposition (CVD) growth process.



IGI



January 5, 2026
IGI Report No LG757531256
CUT CORNERED RECT. MODIFIED BRILLIANT
3.61 CARATS
FANCY INTENSE YELLOW
SI 1
67.6%
64%
Medium to Slightly Thick
Pointed
EXCELLENT
EXCELLENT
NONE
IGI LG757531256
Comments: This Laboratory Grown Diamond was created by Chemical Vapor Deposition (CVD) growth process.