



ELECTRONIC COPY

LG757531177
Report verification at igi.org



December 25, 2025
IGI Report Number **LG757531177**
Description **LABORATORY GROWN DIAMOND**
Shape and Cutting Style **EMERALD CUT**
Measurements **14.78 X 10.39 X 6.95 MM**
GRADING RESULTS
Carat Weight **10.59 CARATS**
Color Grade **F**
Clarity Grade **VVS 2**

December 25, 2025
IGI Report Number **LG757531177**
Description **LABORATORY GROWN DIAMOND**
Shape and Cutting Style **EMERALD CUT**
Measurements **14.78 X 10.39 X 6.95 MM**

GRADING RESULTS

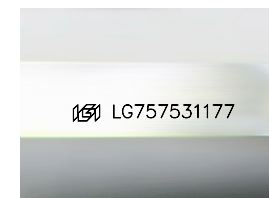
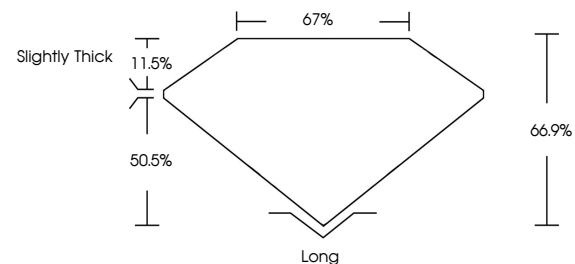
Carat Weight **10.59 CARATS**
Color Grade **F**
Clarity Grade **VVS 2**

ADDITIONAL GRADING INFORMATION

Polish **EXCELLENT**
Symmetry **EXCELLENT**
Fluorescence **NONE**
Inscription(s) **IGI LG757531177**

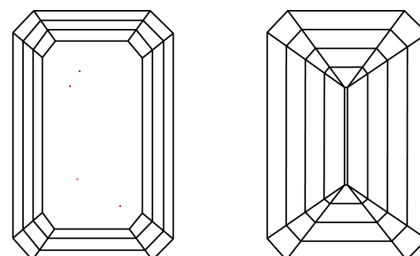
Comments: This Laboratory Grown Diamond was created by Chemical Vapor Deposition (CVD) growth process. Type IIa

PROPORTIONS



Sample Image Used

CLARITY CHARACTERISTICS



KEY TO SYMBOLS

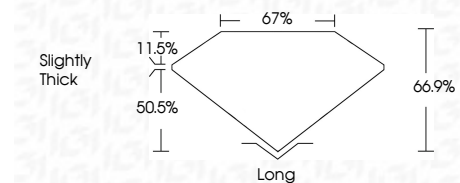
Red symbols indicate internal characteristics.
Green symbols indicate external characteristics.

COLOR

D E F G H I J Faint Very Light Light

CLARITY

FL	IF	VVS ¹⁻²	VS ¹⁻²	SI ¹⁻²	I ¹⁻³
Flawless	Internally Flawless	Very Very Slightly Included	Very Slightly Included	Slightly Included	Included



ADDITIONAL GRADING INFORMATION

Polish **EXCELLENT**
Symmetry **EXCELLENT**
Fluorescence **NONE**
Inscription(s) **IGI LG757531177**
Comments: This Laboratory Grown Diamond was created by Chemical Vapor Deposition (CVD) growth process. Type IIa



IGI



December 25, 2025
IGI Report No. LG757531177
EMERALD CUT
14.78 X 10.39 X 6.95 MM
10.59 CARATS
F
VVS 2
66.9%
67%
Slightly Thick
Long
EXCELLENT
EXCELLENT
NONE
IGI LG757531177
Comments: This Laboratory Grown Diamond was created by Chemical Vapor Deposition (CVD) growth process. Type IIa