



ELECTRONIC COPY

LG757529836
Report verification at igi.org



December 16, 2025

IGI Report Number **LG757529836**

Description **LABORATORY GROWN DIAMOND**

Shape and Cutting Style **MARQUISE BRILLIANT**

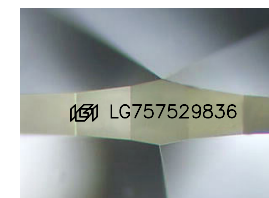
Measurements **12.45 X 6.66 X 4.31 MM**

GRADING RESULTS

Carat Weight **2.07 CARATS**

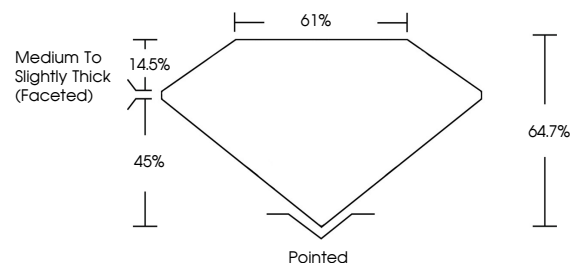
Color Grade **H**

Clarity Grade **VVS 2**

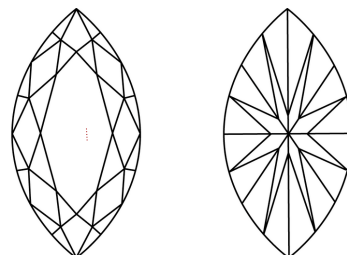


Sample Image Used

PROPORTIONS



CLARITY CHARACTERISTICS



KEY TO SYMBOLS

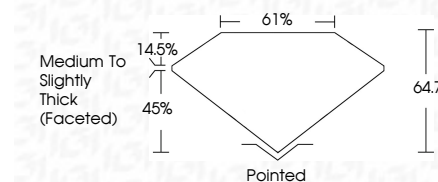
Red symbols indicate internal characteristics.
Green symbols indicate external characteristics.

COLOR

D E F G H I J Faint Very Light Light

CLARITY

FL	IF	VVS ¹⁻²	VS ¹⁻²	SI ¹⁻²	I ¹⁻³
Flawless	Internally Flawless	Very Very Slightly Included	Very Slightly Included	Slightly Included	Included



ADDITIONAL GRADING INFORMATION

Polish **EXCELLENT**

Symmetry **EXCELLENT**

Fluorescence **NONE**

Inscription(s) **IGI LG757529836**

Comments: This Laboratory Grown Diamond was created by Chemical Vapor Deposition (CVD) growth process. Type IIa



December 16, 2025	IGI Report No LG757529836	MARQUISE BRILLIANT	2.07 CARATS	H
12.45 X 6.66 X 4.31 MM	Carat Weight	Color Grade	Clarity Grade	Depth
64.7%	Table	61%	Grades	Medium to Slightly Thick (Faceted)
Pointed	Culet	EXCELLENT	Polish	Symmetry
EXCELLENT	Fluorescence	NONE	Inscription(s)	IGI LG757529836

Comments: This Laboratory Grown Diamond was created by Chemical Vapor Deposition (CVD) growth process. Type IIa