



ELECTRONIC COPY

LG757529605
Report verification at igi.org



December 17, 2025

IGI Report Number LG757529605

Description LABORATORY GROWN DIAMOND

Shape and Cutting Style CUT CORNERED RECTANGULAR MODIFIED BRILLIANT

Measurements 7.50 X 5.12 X 3.30 MM

GRADING RESULTS

Carat Weight 1.10 CARAT

Color Grade E

Clarity Grade VVS 1

December 17, 2025
IGI Report Number LG757529605
Description LABORATORY GROWN DIAMOND
Shape and Cutting Style CUT CORNERED RECTANGULAR MODIFIED BRILLIANT
Measurements 7.50 X 5.12 X 3.30 MM

GRADING RESULTS

Carat Weight 1.10 CARAT

Color Grade E

Clarity Grade VVS 1

ADDITIONAL GRADING INFORMATION

Polish EXCELLENT

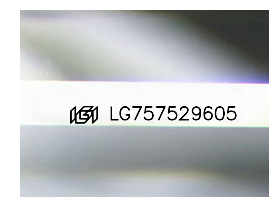
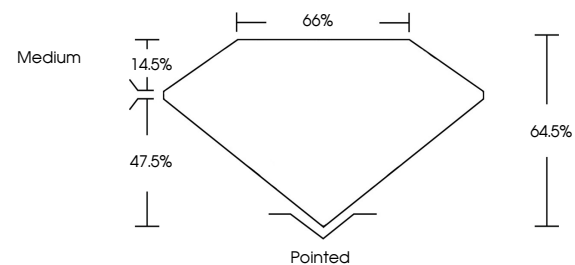
Symmetry EXCELLENT

Fluorescence NONE

Inscription(s) LG757529605

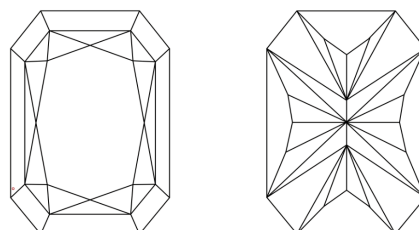
Comments: This Laboratory Grown Diamond was created by Chemical Vapor Deposition (CVD) growth process. Type IIa

PROPORTIONS



Sample Image Used

CLARITY CHARACTERISTICS



KEY TO SYMBOLS

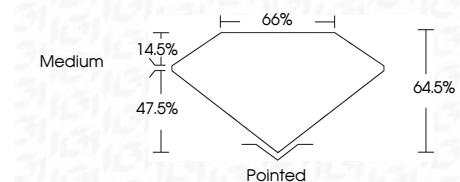
Red symbols indicate internal characteristics. Green symbols indicate external characteristics.

COLOR

D E F G H I J Faint Very Light Light

CLARITY

FL IF VVS 1-2 VS 1-2 SI 1-2 I 1-3
Flawless Internally Flawless Very Very Slightly Included Very Slightly Included Slightly Included Included



ADDITIONAL GRADING INFORMATION

Polish EXCELLENT

Symmetry EXCELLENT

Fluorescence NONE

Inscription(s) LG757529605

Comments: This Laboratory Grown Diamond was created by Chemical Vapor Deposition (CVD) growth process. Type IIa



IGI



December 17, 2025
IGI Report No LG757529605
CUT CORNERED RECT. MODIFIED BRILLIANT
7.50 X 5.12 X 3.30 MM
1.10 CARAT
E
VVS 1
64.5%
47.5%
Medium
Pointed
EXCELLENT
EXCELLENT
NONE
LG757529605
Comments: This Laboratory Grown Diamond was created by Chemical Vapor Deposition (CVD) growth process. Type IIa