



**ELECTRONIC COPY**

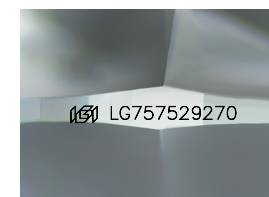
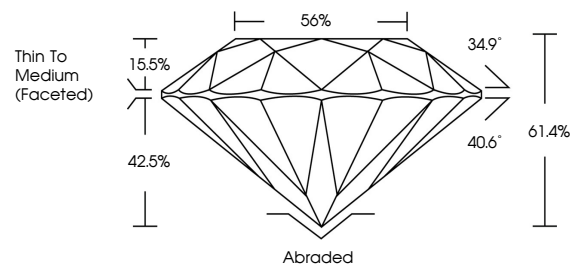
LG757529270  
Report verification at igi.org



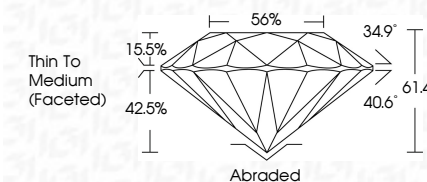
December 25, 2025  
IGI Report Number **LG757529270**  
Description **LABORATORY GROWN DIAMOND**  
Shape and Cutting Style **ROUND BRILLIANT**  
Measurements **11.00 - 11.05 X 6.77 MM**  
**GRADING RESULTS**  
Carat Weight **5.07 CARATS**  
Color Grade **F**  
Clarity Grade **VS 2**  
Cut Grade **VERY GOOD**

December 25, 2025  
IGI Report Number **LG757529270**  
Description **LABORATORY GROWN DIAMOND**  
Shape and Cutting Style **ROUND BRILLIANT**  
Measurements **11.00 - 11.05 X 6.77 MM**  
**GRADING RESULTS**  
Carat Weight **5.07 CARATS**  
Color Grade **F**  
Clarity Grade **VS 2**  
Cut Grade **VERY GOOD**

**PROPORTIONS**



Sample Image Used



**ADDITIONAL GRADING INFORMATION**  
Polish **GOOD**  
Symmetry **EXCELLENT**  
Fluorescence **NONE**  
Inscription(s) **IGI LG757529270**

Comments: This Laboratory Grown Diamond was created by Chemical Vapor Deposition (CVD) growth process. Type IIa

**COLOR**

D E F G H I J Faint Very Light Light

**CLARITY**

FL	IF	VS <sup>1-2</sup>	VS <sup>1-2</sup>	SI <sup>1-2</sup>	I <sup>1-3</sup>
Flawless	Internally Flawless	Very Very Slightly Included	Very Slightly Included	Slightly Included	Included

**ADDITIONAL GRADING INFORMATION**

Polish **GOOD**  
Symmetry **EXCELLENT**  
Fluorescence **NONE**  
Inscription(s) **IGI LG757529270**  
Comments: This Laboratory Grown Diamond was created by Chemical Vapor Deposition (CVD) growth process. Type IIa



**IGI**



December 25, 2025  
IGI Report No **LG757529270**  
**ROUND BRILLIANT**  
11.00 - 11.05 X 6.77 MM  
Carat Weight **5.07 CARATS**  
Color Grade **F**  
Clarity Grade **VS 2**  
Cut Grade **VERY GOOD**  
Depth **61.4%**  
Table **56%**  
Girdle **Thin To Medium (Faceted)**  
Culet **Abraded**  
Polish **GOOD**  
Symmetry **EXCELLENT**  
Fluorescence **NONE**  
Inscription(s) **IGI LG757529270**  
Comments: This Laboratory Grown Diamond was created by Chemical Vapor Deposition (CVD) growth process. Type IIa