



ELECTRONIC COPY

LG757527498
Report verification at igi.org



December 19, 2025
IGI Report Number **LG757527498**
Description **LABORATORY GROWN DIAMOND**
Shape and Cutting Style **CUT CORNERED
RECTANGULAR MODIFIED
BRILLIANT**
Measurements **14.74 X 10.10 X 6.56 MM**
GRADING RESULTS
Carat Weight **9.04 CARATS**
Color Grade **FANCY VIVID PINK**
Clarity Grade **VS 1**

December 19, 2025
IGI Report Number **LG757527498**
Description **LABORATORY GROWN DIAMOND**
Shape and Cutting Style **CUT CORNERED RECTANGULAR
MODIFIED BRILLIANT**
Measurements **14.74 X 10.10 X 6.56 MM**

GRADING RESULTS

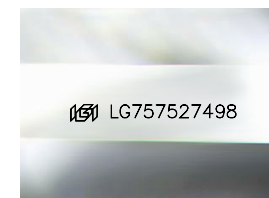
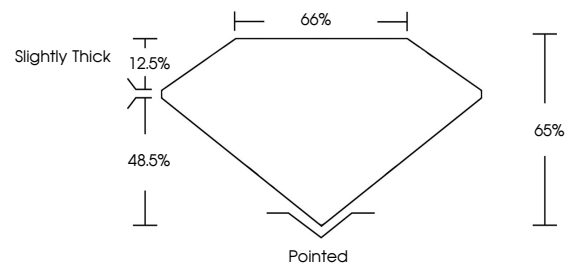
Carat Weight **9.04 CARATS**
Color Grade **FANCY VIVID PINK**
Clarity Grade **VS 1**

ADDITIONAL GRADING INFORMATION

Polish **EXCELLENT**
Symmetry **EXCELLENT**
Fluorescence **STRONG**
Inscription(s) **IGI LG757527498**

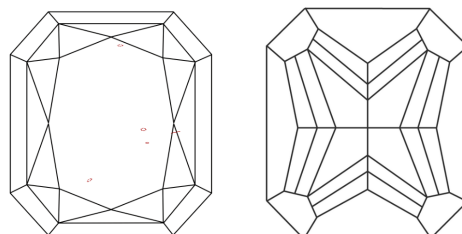
Comments: This Laboratory Grown Diamond was created by Chemical Vapor Deposition (CVD) growth process. Indications of post-growth treatment.

PROPORTIONS



Sample Image Used

CLARITY CHARACTERISTICS



KEY TO SYMBOLS

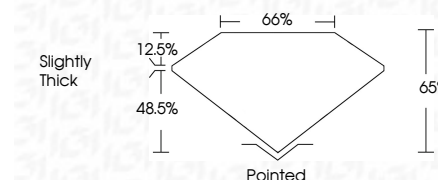
Red symbols indicate internal characteristics.
Green symbols indicate external characteristics.

COLOR

D E F G H I J Faint Very Light Light

CLARITY

FL	IF	VS ¹⁻²	VS ¹⁻²	SI ¹⁻²	I ¹⁻³
Flawless	Internally Flawless	Very Very Slightly Included	Very Slightly Included	Slightly Included	Included



ADDITIONAL GRADING INFORMATION

Polish **EXCELLENT**
Symmetry **EXCELLENT**
Fluorescence **STRONG**
Inscription(s) **IGI LG757527498**
Comments: This Laboratory Grown Diamond was created by Chemical Vapor Deposition (CVD) growth process. Indications of post-growth treatment.



December 19, 2025
IGI Report No. LG757527498
CUT CORNERED RECT. MODIFIED BRILLIANT
14.74 X 10.10 X 6.56 MM
9.04 CARATS
FANCY VIVID PINK
VS 1
65%
65%
Slightly Thick
Pointed
EXCELLENT
EXCELLENT
STRONG
IGI LG757527498

Comments: This Laboratory Grown Diamond was created by Chemical Vapor Deposition (CVD) growth process. Indications of post-growth treatment.