



ELECTRONIC COPY

LG757526483
Report verification at igi.org



December 15, 2025
IGI Report Number **LG757526483**
Description **LABORATORY GROWN DIAMOND**
Shape and Cutting Style **HEPTAGONAL MODIFIED STEP CUT**
Measurements **11.81 X 7.79 X 3.98 MM**
GRADING RESULTS
Carat Weight **2.66 CARATS**
Color Grade **E**
Clarity Grade **VS 2**

December 15, 2025
IGI Report Number **LG757526483**
Description **LABORATORY GROWN DIAMOND**
Shape and Cutting Style **HEPTAGONAL MODIFIED STEP CUT**
Measurements **11.81 X 7.79 X 3.98 MM**

GRADING RESULTS

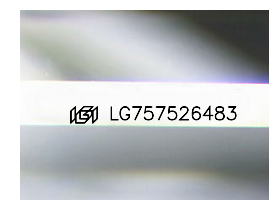
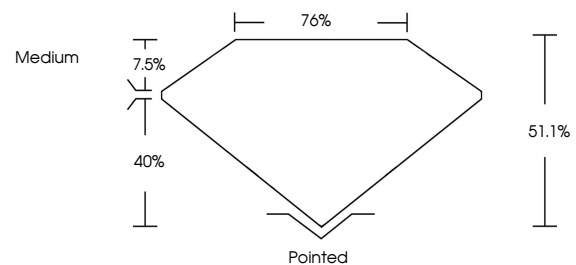
Carat Weight **2.66 CARATS**
Color Grade **E**
Clarity Grade **VS 2**

ADDITIONAL GRADING INFORMATION

Polish **EXCELLENT**
Symmetry **EXCELLENT**
Fluorescence **NONE**
Inscription(s) **IGI LG757526483**

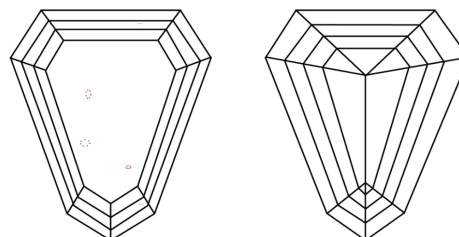
Comments: This Laboratory Grown Diamond was created by Chemical Vapor Deposition (CVD) growth process.
Type IIa

PROPORTIONS



Sample Image Used

CLARITY CHARACTERISTICS



KEY TO SYMBOLS

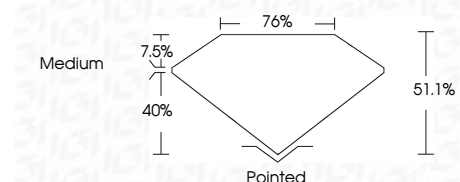
Red symbols indicate internal characteristics.
Green symbols indicate external characteristics.

COLOR

D E F G H I J Faint Very Light Light

CLARITY

FL	IF	VS ¹⁻²	VS ¹⁻²	SI ¹⁻²	I ¹⁻³
Flawless	Internally Flawless	Very Very Slightly Included	Very Slightly Included	Slightly Included	Included



ADDITIONAL GRADING INFORMATION

Polish **EXCELLENT**
Symmetry **EXCELLENT**
Fluorescence **NONE**
Inscription(s) **IGI LG757526483**
Comments: This Laboratory Grown Diamond was created by Chemical Vapor Deposition (CVD) growth process.
Type IIa



December 15, 2025
IGI Report No LG757526483
HEPTAGONAL MODIFIED STEP CUT
11.81 X 7.79 X 3.98 MM
2.66 CARATS
E
VS 2
51.1%
76%
Medium
Pointed
EXCELLENT
EXCELLENT
NONE
IGI LG757526483
Comments: This Laboratory Grown Diamond was created by Chemical Vapor Deposition (CVD) growth process.
Type IIa