

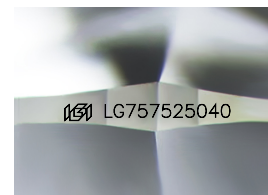
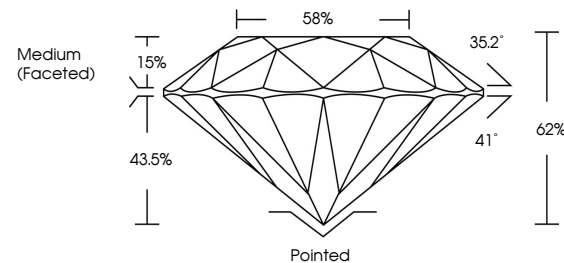


**ELECTRONIC COPY**

## LABORATORY GROWN DIAMOND REPORT

LG757525040  
Report verification at [igi.org](https://igi.org)

## PROPORTIONS



Sample Image Used

## COLOR

D E F G H I J Faint Very Light Light

## CLARITY

FL	IF	VVS <sup>1-2</sup>	VS <sup>1-2</sup>	SI <sup>1-2</sup>	I <sup>1-3</sup>
Flawless	Internally Flawless	Very Very Slightly Included	Very Slightly Included	Slightly Included	Included

## LABORATORY GROWN DIAMOND REPORT



December 15, 2025

IGI Report Number **LG757525040**Description **LABORATORY GROWN DIAMOND**Shape and Cutting Style **ROUND BRILLIANT**

Measurements 8.09 - 8.15 X 5.04 MM

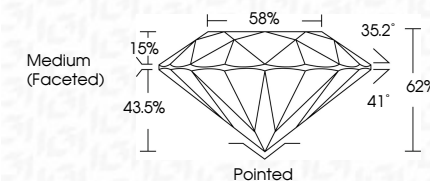
## GRADING RESULTS

Carat Weight **2.06 CARATS**

Color Grade E

Clarity Grade **VVS 2**

Cut Grade **IDEAL**



### ADDITIONAL GRADING INFORMATION

Polish **EXCELLENT**Symmetry **EXCELLENT**Fluorescence **NONE**Inscription(s)  LG757525040

Comments: This Laboratory Grown Diamond was created by Chemical Vapor Deposition (CVD) growth process.  
Type IIa



**www.igi.org**

© IGI 2020, International Gemological Institute

FD - 10 20



THIS DOCUMENT WAS PRODUCED WITH THE FOLLOWING SECURITY MEASURES: SPECIAL DOCUMENT PAPER, INK SCREENS, WATERMARK, BACKGROUND DESIGNS, HOLOGRAM AND OTHER SECURITY FEATURES NOT LISTED AND DO EXCEED DOCUMENT SECURITY INDUSTRY GUIDELINES

December 15, 2025  
IGI Report No LG757525040  
ROUND BRILLIANT

ROUND BRILLIANT	18.09 - 8.15 X 5.04 MM
Carat Weight	2.06 CARATS
Color Grade	E
Clarity Grade	VVS 2
Cut Grade	IDEAL
Depth	62%
Table	58%
Girdle	Medium (Excellent)

Culet	Pointed
Polish	EXCELLENT
Symmetry	EXCELLENT
Fluorescence	NONE

**Comments:**  
This Laboratory Grown Diamond was  
created by Chemical Vapor Deposition  
(CVD) growth process.