



**ELECTRONIC COPY**

LG757523221  
Report verification at igi.org



December 16, 2025

IGI Report Number **LG757523221**

Description **LABORATORY GROWN DIAMOND**

Shape and Cutting Style **ROUND BRILLIANT**

Measurements **8.79 - 8.82 X 5.43 MM**

**GRADING RESULTS**

Carat Weight **2.59 CARATS**

Color Grade **E**

Clarity Grade **SI 1**

Cut Grade **IDEAL**

December 16, 2025

IGI Report Number **LG757523221**

Description **LABORATORY GROWN DIAMOND**

Shape and Cutting Style **ROUND BRILLIANT**

Measurements **8.79 - 8.82 X 5.43 MM**

**GRADING RESULTS**

Carat Weight **2.59 CARATS**

Color Grade **E**

Clarity Grade **SI 1**

Cut Grade **IDEAL**

**ADDITIONAL GRADING INFORMATION**

Polish **EXCELLENT**

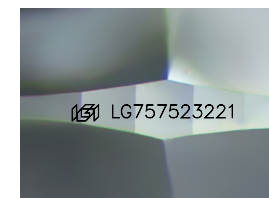
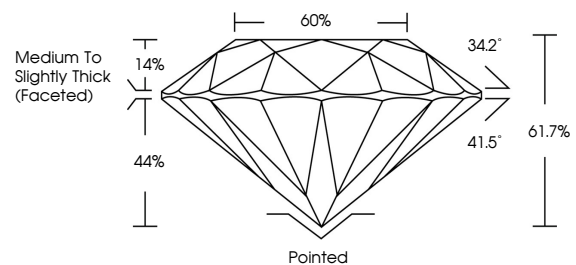
Symmetry **EXCELLENT**

Fluorescence **NONE**

Inscription(s) **IGI LG757523221**

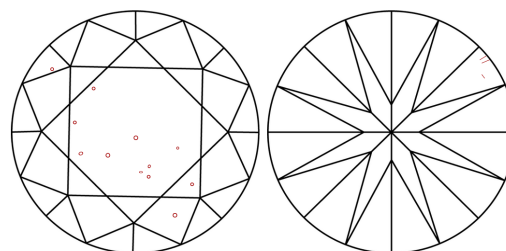
Comments: This Laboratory Grown Diamond was created by Chemical Vapor Deposition (CVD) growth process. Type IIa

**PROPORTIONS**



Sample Image Used

**CLARITY CHARACTERISTICS**



**KEY TO SYMBOLS**

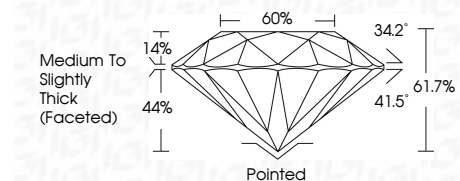
Red symbols indicate internal characteristics.  
Green symbols indicate external characteristics.

**COLOR**

D E F G H I J Faint Very Light Light

**CLARITY**

FL	IF	VS <sup>1-2</sup>	VS <sup>1-2</sup>	SI <sup>1-2</sup>	I <sup>1-3</sup>
Flawless	Internally Flawless	Very Very Slightly Included	Very Slightly Included	Slightly Included	Included



**ADDITIONAL GRADING INFORMATION**

Polish **EXCELLENT**

Symmetry **EXCELLENT**

Fluorescence **NONE**

Inscription(s) **IGI LG757523221**

Comments: This Laboratory Grown Diamond was created by Chemical Vapor Deposition (CVD) growth process. Type IIa



**IGI**



December 16, 2025  
IGI Report No LG757523221  
**ROUND BRILLIANT**

**8.79 - 8.82 X 5.43 MM**

**2.59 CARATS**

Color Grade **E**

Clarity Grade **SI 1**

Cut Grade **IDEAL**

Depth **61.7%**

Table **60%**

Grade **Medium To Slightly Thick (Faceted)**

Culet **Pointed**

Polish **EXCELLENT**

Symmetry **EXCELLENT**

Fluorescence **NONE**

Inscription(s) **IGI LG757523221**

Comments: This Laboratory Grown Diamond was created by Chemical Vapor Deposition (CVD) growth process. Type IIa