



**ELECTRONIC COPY**

LG757523175  
Report verification at igi.org



December 17, 2025

IGI Report Number **LG757523175**

Description **LABORATORY GROWN DIAMOND**

Shape and Cutting Style **CUT CORNERED  
RECTANGULAR MODIFIED  
BRILLIANT**

Measurements **10.16 X 7.16 X 4.75 MM**

**GRADING RESULTS**

Carat Weight **2.97 CARATS**

Color Grade **E**

Clarity Grade **VVS 2**

December 17, 2025

IGI Report Number **LG757523175**

Description **LABORATORY GROWN DIAMOND**

Shape and Cutting Style **CUT CORNERED RECTANGULAR  
MODIFIED BRILLIANT**

Measurements **10.16 X 7.16 X 4.75 MM**

**GRADING RESULTS**

Carat Weight **2.97 CARATS**

Color Grade **E**

Clarity Grade **VVS 2**

**ADDITIONAL GRADING INFORMATION**

Polish **EXCELLENT**

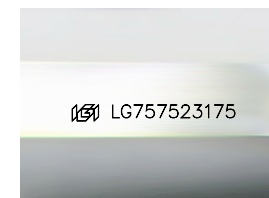
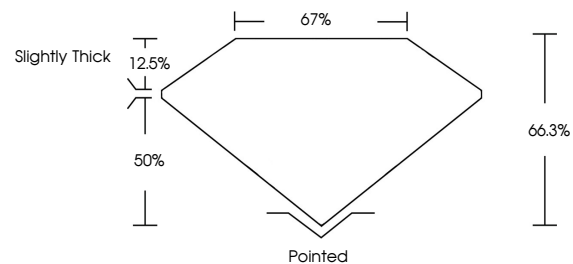
Symmetry **EXCELLENT**

Fluorescence **NONE**

Inscription(s) **IGI LG757523175**

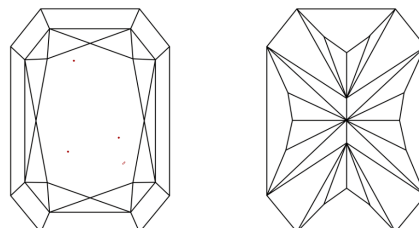
Comments: This Laboratory Grown Diamond was created by Chemical Vapor Deposition (CVD) growth process. Type IIa

**PROPORTIONS**



Sample Image Used

**CLARITY CHARACTERISTICS**



**KEY TO SYMBOLS**

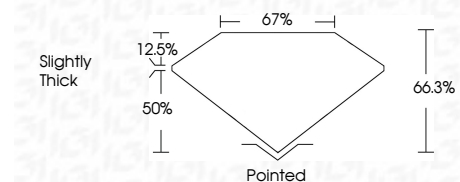
Red symbols indicate internal characteristics.  
Green symbols indicate external characteristics.

**COLOR**

D E F G H I J Faint Very Light Light

**CLARITY**

FL	IF	VVS <sup>1-2</sup>	VS <sup>1-2</sup>	SI <sup>1-2</sup>	I <sup>1-3</sup>
Flawless	Internally Flawless	Very Very Slightly Included	Very Slightly Included	Slightly Included	Included



**ADDITIONAL GRADING INFORMATION**

Polish **EXCELLENT**

Symmetry **EXCELLENT**

Fluorescence **NONE**

Inscription(s) **IGI LG757523175**

Comments: This Laboratory Grown Diamond was created by Chemical Vapor Deposition (CVD) growth process. Type IIa



**IGI**



December 17, 2025  
IGI Report No LG757523175  
CUT CORNERED RECT. MODIFIED BRILLIANT  
10.16 X 7.16 X 4.75 MM  
Carat Weight 2.97 CARATS  
Color Grade E  
Clarity Grade VVS 2  
Depth 66.3%  
Table 67%  
Girdle Slightly Thick  
Culet Pointed  
Polish EXCELLENT  
Symmetry EXCELLENT  
Fluorescence NONE  
Inscription(s) IGI LG757523175  
Comments: This Laboratory Grown Diamond was created by Chemical Vapor Deposition (CVD) growth process. Type IIa