



ELECTRONIC COPY

LG757522938
Report verification at igi.org



December 17, 2025

IGI Report Number **LG757522938**

Description **LABORATORY GROWN DIAMOND**

Shape and Cutting Style **MARQUISE BRILLIANT**

Measurements **11.91 X 6.01 X 3.68 MM**

GRADING RESULTS

Carat Weight **1.50 CARAT**

Color Grade **E**

Clarity Grade **VVS 1**

December 17, 2025
IGI Report Number **LG757522938**
Description **LABORATORY GROWN DIAMOND**
Shape and Cutting Style **MARQUISE BRILLIANT**
Measurements **11.91 X 6.01 X 3.68 MM**

GRADING RESULTS

Carat Weight **1.50 CARAT**

Color Grade **E**

Clarity Grade **VVS 1**

ADDITIONAL GRADING INFORMATION

Polish **EXCELLENT**

Symmetry **EXCELLENT**

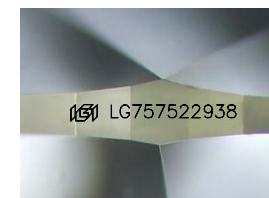
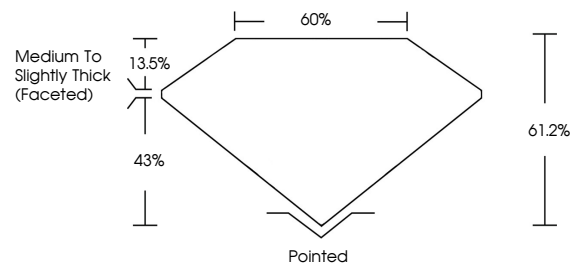
Fluorescence **NONE**

Inscription(s) **IGI LG757522938**

Comments: As Grown - No indication of post-growth treatment.

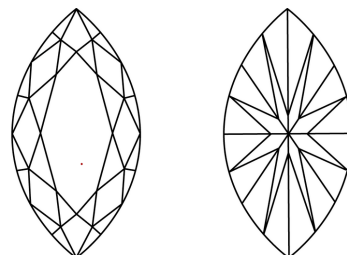
This Laboratory Grown Diamond was created by High Pressure High Temperature (HPHT) growth process. Type II

PROPORTIONS



Sample Image Used

CLARITY CHARACTERISTICS



KEY TO SYMBOLS

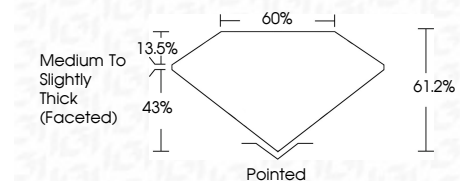
Red symbols indicate internal characteristics.
Green symbols indicate external characteristics.

COLOR

D E F G H I J Faint Very Light Light

CLARITY

FL	IF	VS ¹⁻²	VS ¹⁻²	SI ¹⁻²	I ¹⁻³
Flawless	Internally Flawless	Very Very Slightly Included	Very Slightly Included	Slightly Included	Included



ADDITIONAL GRADING INFORMATION

Polish **EXCELLENT**

Symmetry **EXCELLENT**

Fluorescence **NONE**

Inscription(s) **IGI LG757522938**

Comments: As Grown - No indication of post-growth treatment.

This Laboratory Grown Diamond was created by High Pressure High Temperature (HPHT) growth process. Type II



IGI



December 17, 2025
IGI Report No LG757522938
MARQUISE BRILLIANT
11.91 X 6.01 X 3.68 MM
1.50 CARAT
E
VVS 1
61.2%
43%
Medium to Slightly Thick (Faceted)
Pointed
EXCELLENT
EXCELLENT
NONE
IGI LG757522938
Comments: As Grown - No indication of post-growth treatment.
This Laboratory Grown Diamond was created by High Pressure High Temperature (HPHT) growth process. Type II