



ELECTRONIC COPY

LG757522910
Report verification at igi.org



December 25, 2025

IGI Report Number **LG757522910**

Description **LABORATORY GROWN DIAMOND**

Shape and Cutting Style **CUT CORNERED
RECTANGULAR MODIFIED
BRILLIANT**

Measurements **7.04 X 4.68 X 3.33 MM**

GRADING RESULTS

Carat Weight **1.00 CARAT**

Color Grade **FANCY INTENSE YELLOW**

Clarity Grade **VS 2**

December 25, 2025
IGI Report Number **LG757522910**
Description **LABORATORY GROWN DIAMOND**
Shape and Cutting Style **CUT CORNERED RECTANGULAR
MODIFIED BRILLIANT**
Measurements **7.04 X 4.68 X 3.33 MM**

GRADING RESULTS

Carat Weight **1.00 CARAT**

Color Grade **FANCY INTENSE YELLOW**

Clarity Grade **VS 2**

ADDITIONAL GRADING INFORMATION

Polish **EXCELLENT**

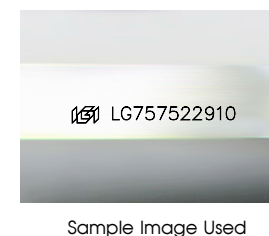
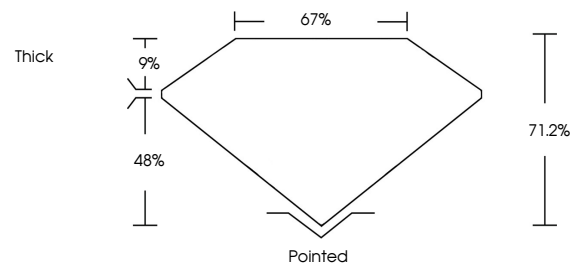
Symmetry **VERY GOOD**

Fluorescence **NONE**

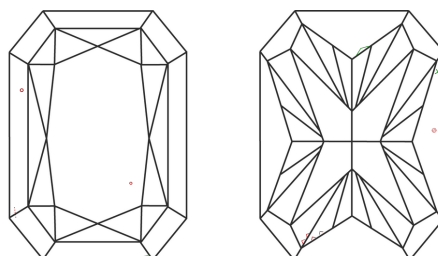
Inscription(s) **IGI LG757522910**

Comments: This Laboratory Grown Diamond was created by Chemical Vapor Deposition (CVD) growth process.

PROPORTIONS



CLARITY CHARACTERISTICS



KEY TO SYMBOLS

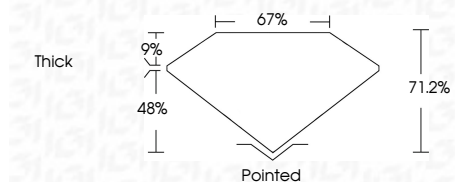
Red symbols indicate internal characteristics.
Green symbols indicate external characteristics.

COLOR

D E F G H I J Faint Very Light Light

CLARITY

FL	IF	VS ¹⁻²	VS ¹⁻²	SI ¹⁻²	I ¹⁻³
Flawless	Internally Flawless	Very Very Slightly Included	Very Slightly Included	Slightly Included	Included



ADDITIONAL GRADING INFORMATION

Polish **EXCELLENT**

Symmetry **VERY GOOD**

Fluorescence **NONE**

Inscription(s) **IGI LG757522910**

Comments: This Laboratory Grown Diamond was created by Chemical Vapor Deposition (CVD) growth process.



IGI



December 25, 2025
IGI Report No **LG757522910**
CUT CORNERED RECT. MODIFIED BRILLIANT
7.04 X 4.68 X 3.33 MM
Carat Weight **1.00 CARAT**
Color Grade **FANCY INTENSE YELLOW**
Clarity Grade **VS 2**
Depth **71.2%**
Table **67%**
Girdle **Thick**
Culet **Pointed**
Polish **EXCELLENT**
Symmetry **VERY GOOD**
Fluorescence **NONE**
Inscription(s) **IGI LG757522910**
Comments: This Laboratory Grown Diamond was created by Chemical Vapor Deposition (CVD) growth process.