



ELECTRONIC COPY

LG757522310
Report verification at igi.org



December 19, 2025

IGI Report Number **LG757522310**

Description **LABORATORY GROWN DIAMOND**

Shape and Cutting Style **ROUND BRILLIANT**

Measurements **7.27 - 7.32 X 4.51 MM**

GRADING RESULTS

Carat Weight **1.47 CARAT**

Color Grade **E**

Clarity Grade **VS 1**

Cut Grade **IDEAL**

December 19, 2025

IGI Report Number **LG757522310**

Description **LABORATORY GROWN DIAMOND**

Shape and Cutting Style **ROUND BRILLIANT**

Measurements **7.27 - 7.32 X 4.51 MM**

GRADING RESULTS

Carat Weight **1.47 CARAT**

Color Grade **E**

Clarity Grade **VS 1**

Cut Grade **IDEAL**

ADDITIONAL GRADING INFORMATION

Polish **EXCELLENT**

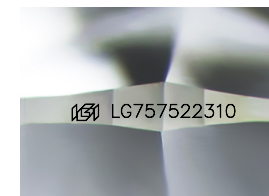
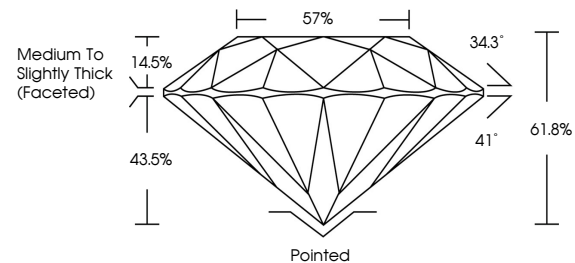
Symmetry **EXCELLENT**

Fluorescence **NONE**

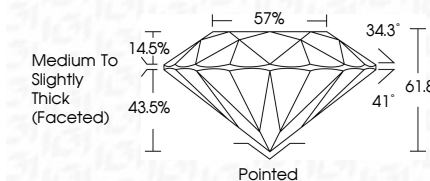
Inscription(s) **LG757522310**

Comments: This Laboratory Grown Diamond was created by Chemical Vapor Deposition (CVD) growth process. Type IIa

PROPORTIONS



Sample Image Used



COLOR

D E F G H I J Faint Very Light Light

CLARITY

FL	IF	VS ¹⁻²	VS ¹⁻²	SI ¹⁻²	I ¹⁻³
Flawless	Internally Flawless	Very Very Slightly Included	Very Slightly Included	Slightly Included	Included

ADDITIONAL GRADING INFORMATION

Polish **EXCELLENT**

Symmetry **EXCELLENT**

Fluorescence **NONE**

Inscription(s) **LG757522310**

Comments: This Laboratory Grown Diamond was created by Chemical Vapor Deposition (CVD) growth process. Type IIa



IGI



December 19, 2025
IGI Report No LG757522310
ROUND BRILLIANT

1.47 CARAT
E

7.27 - 7.32 X 4.51 MM

Carat Weight
Color Grade
Clarity Grade
Cut Grade
Depth
Table
Girdle

VS 1
IDEAL
61.8%
57%
Medium To Slightly Thick (Faceted)

Pointed
EXCELLENT
EXCELLENT
NONE
NONE

IGI LG757522310

Comments: This Laboratory Grown Diamond was created by Chemical Vapor Deposition (CVD) growth process. Type IIa