



ELECTRONIC COPY

LG757521613
Report verification at igi.org



December 17, 2025
IGI Report Number **LG757521613**
Description **LABORATORY GROWN DIAMOND**
Shape and Cutting Style **RECTANGULAR PRINCESS**
Measurements **5.96 X 5.55 X 3.63 MM**
GRADING RESULTS
Carat Weight **1.10 CARAT**
Color Grade **FANCY VIVID BROWNISH PINK**
Clarity Grade **VS 2**

December 17, 2025
IGI Report Number **LG757521613**
Description **LABORATORY GROWN DIAMOND**
Shape and Cutting Style **RECTANGULAR PRINCESS**
Measurements **5.96 X 5.55 X 3.63 MM**

GRADING RESULTS

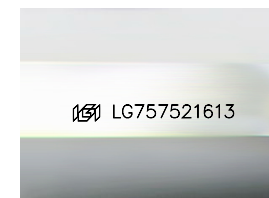
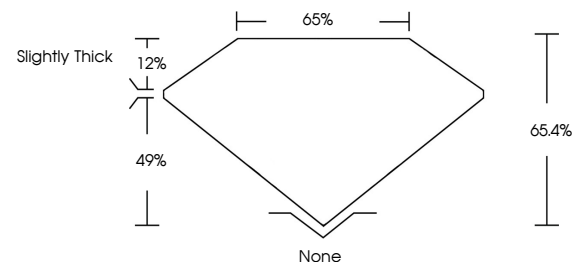
Carat Weight **1.10 CARAT**
Color Grade **FANCY VIVID BROWNISH PINK**
Clarity Grade **VS 2**

ADDITIONAL GRADING INFORMATION

Polish **VERY GOOD**
Symmetry **VERY GOOD**
Fluorescence **SLIGHT**
Inscription(s) **IGI LG757521613**

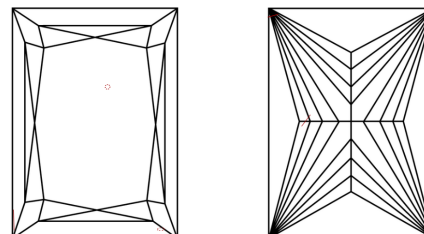
Comments: This Laboratory Grown Diamond was created by Chemical Vapor Deposition (CVD) growth process.
Indications of post-growth treatment.

PROPORTIONS



Sample Image Used

CLARITY CHARACTERISTICS



KEY TO SYMBOLS

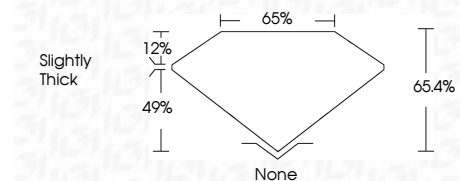
Red symbols indicate internal characteristics.
Green symbols indicate external characteristics.

COLOR

D E F G H I J Faint Very Light Light

CLARITY

FL	IF	VS ¹⁻²	VS ¹⁻²	SI ¹⁻²	I ¹⁻³
Flawless	Internally Flawless	Very Very Slightly Included	Very Slightly Included	Slightly Included	Included



ADDITIONAL GRADING INFORMATION

Polish **VERY GOOD**
Symmetry **VERY GOOD**
Fluorescence **SLIGHT**
Inscription(s) **IGI LG757521613**
Comments: This Laboratory Grown Diamond was created by Chemical Vapor Deposition (CVD) growth process.
Indications of post-growth treatment.



December 17, 2025
IGI Report No LG757521613
RECTANGULAR PRINCESS
1.10 CARAT
FANCY VIVID BROWNISH PINK
Color Grade
VS 2
5.96 X 5.55 X 3.63 MM
Depth 49%
Table 12%
Girdle Slightly Thick
None
VERY GOOD
VERY GOOD
SLIGHT
IGI LG757521613
Comments: This Laboratory Grown Diamond was created by Chemical Vapor Deposition (CVD) growth process.
Indications of post-growth treatment.