



ELECTRONIC COPY

LG757521599
Report verification at igi.org



December 18, 2025
IGI Report Number **LG757521599**
Description **LABORATORY GROWN DIAMOND**
Shape and Cutting Style **SQUARE CUSHION MODIFIED BRILLIANT**
Measurements **6.58 X 6.51 X 4.24 MM**
GRADING RESULTS
Carat Weight **1.57 CARAT**
Color Grade **FANCY VIVID BROWNISH PINK**
Clarity Grade **VS 1**

December 18, 2025
IGI Report Number **LG757521599**
Description **LABORATORY GROWN DIAMOND**
Shape and Cutting Style **SQUARE CUSHION MODIFIED BRILLIANT**
Measurements **6.58 X 6.51 X 4.24 MM**

GRADING RESULTS

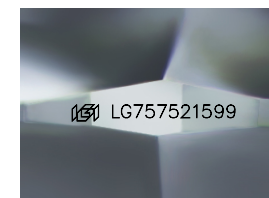
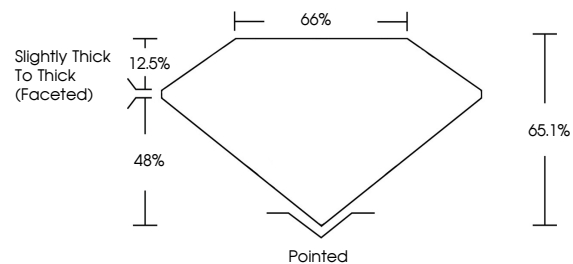
Carat Weight **1.57 CARAT**
Color Grade **FANCY VIVID BROWNISH PINK**
Clarity Grade **VS 1**

ADDITIONAL GRADING INFORMATION

Polish **VERY GOOD**
Symmetry **VERY GOOD**
Fluorescence **SLIGHT**
Inscription(s) **IGI LG757521599**

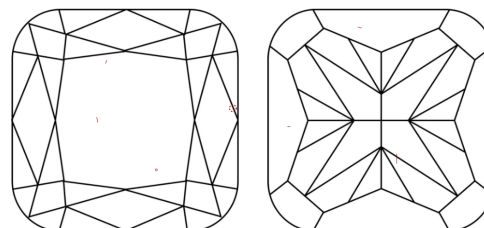
Comments: This Laboratory Grown Diamond was created by Chemical Vapor Deposition (CVD) growth process. Indications of post-growth treatment.

PROPORTIONS



Sample Image Used

CLARITY CHARACTERISTICS



KEY TO SYMBOLS

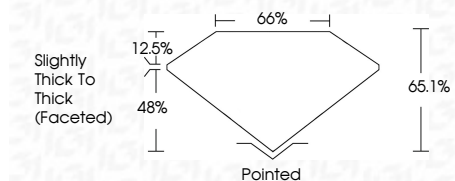
Red symbols indicate internal characteristics.
Green symbols indicate external characteristics.

COLOR

D E F G H I J Faint Very Light Light

CLARITY

FL	IF	VS ¹⁻²	VS ¹⁻²	SI ¹⁻²	I ¹⁻³
Flawless	Internally Flawless	Very Very Slightly Included	Very Slightly Included	Slightly Included	Included



ADDITIONAL GRADING INFORMATION

Polish **VERY GOOD**
Symmetry **VERY GOOD**
Fluorescence **SLIGHT**
Inscription(s) **IGI LG757521599**
Comments: This Laboratory Grown Diamond was created by Chemical Vapor Deposition (CVD) growth process. Indications of post-growth treatment.



December 18, 2025
IGI Report No LG757521599
SQUARE CUSHION MODIFIED BRILLIANT
6.58 X 6.51 X 4.24 MM
1.57 CARAT
FANCY VIVID BROWNISH PINK
Color Grade
VS 1
Clarity Grade
65.1%
48%
Slightly Thick To Thick (Faceted)
Pointed
VERY GOOD
VERY GOOD
SLIGHT
IGI LG757521599
Comments: This Laboratory Grown Diamond was created by Chemical Vapor Deposition (CVD) growth process. Indications of post-growth treatment.