



ELECTRONIC COPY

LG757521587
Report verification at igi.org



December 18, 2025
IGI Report Number **LG757521587**
Description **LABORATORY GROWN DIAMOND**
Shape and Cutting Style **CUSHION MODIFIED BRILLIANT**
Measurements **6.57 X 6.21 X 4.02 MM**
GRADING RESULTS
Carat Weight **1.37 CARAT**
Color Grade **FANCY DEEP PINK**
Clarity Grade **VS 2**

LABORATORY GROWN DIAMOND REPORT

December 18, 2025
IGI Report Number **LG757521587**
Description **LABORATORY GROWN DIAMOND**
Shape and Cutting Style **CUSHION MODIFIED BRILLIANT**
Measurements **6.57 X 6.21 X 4.02 MM**

GRADING RESULTS

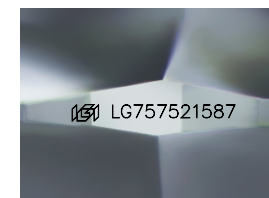
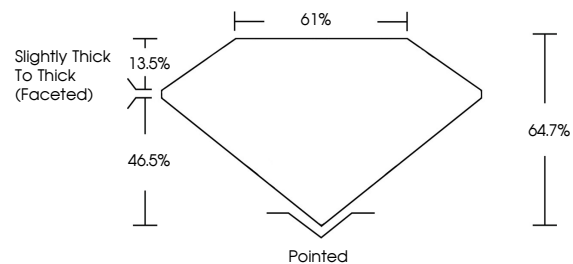
Carat Weight **1.37 CARAT**
Color Grade **FANCY DEEP PINK**
Clarity Grade **VS 2**

ADDITIONAL GRADING INFORMATION

Polish **EXCELLENT**
Symmetry **VERY GOOD**
Fluorescence **SLIGHT**
Inscription(s) **IGI LG757521587**

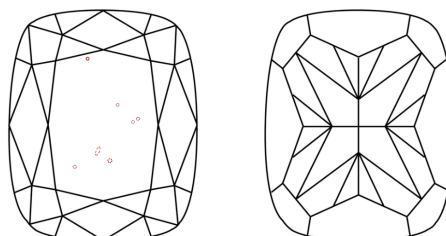
Comments: This Laboratory Grown Diamond was created by Chemical Vapor Deposition (CVD) growth process.
Indications of post-growth treatment.

PROPORTIONS



Sample Image Used

CLARITY CHARACTERISTICS



KEY TO SYMBOLS

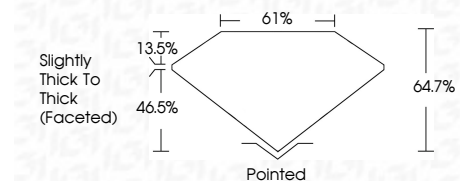
Red symbols indicate internal characteristics.
Green symbols indicate external characteristics.

COLOR

D E F G H I J Faint Very Light Light

CLARITY

FL	IF	VS ¹⁻²	VS ¹⁻²	SI ¹⁻²	I ¹⁻³
Flawless	Internally Flawless	Very Very Slightly Included	Very Slightly Included	Slightly Included	Included



ADDITIONAL GRADING INFORMATION

Polish **EXCELLENT**
Symmetry **VERY GOOD**
Fluorescence **SLIGHT**
Inscription(s) **IGI LG757521587**
Comments: This Laboratory Grown Diamond was created by Chemical Vapor Deposition (CVD) growth process.
Indications of post-growth treatment.



December 18, 2025
IGI Report No LG757521587
CUSHION MODIFIED BRILLIANT
6.57 X 6.21 X 4.02 MM
1.37 CARAT
FANCY DEEP PINK
VS 2
64.7%
61%
Slightly Thick To Thick (Faceted)
Pointed
EXCELLENT
VERY GOOD
SLIGHT
IGI LG757521587
Comments: This Laboratory Grown Diamond was created by Chemical Vapor Deposition (CVD) growth process.
Indications of post-growth treatment.