



ELECTRONIC COPY

LG757521580
Report verification at igi.org



December 17, 2025
IGI Report Number **LG757521580**
Description **LABORATORY GROWN DIAMOND**
Shape and Cutting Style **ROUND BRILLIANT**
Measurements **7.16 - 7.21 X 4.22 MM**
GRADING RESULTS
Carat Weight **1.31 CARAT**
Color Grade **FANCY VIVID BLUE**
Clarity Grade **VVS 2**
Cut Grade **EXCELLENT**

December 17, 2025
IGI Report Number **LG757521580**
Description **LABORATORY GROWN DIAMOND**
Shape and Cutting Style **ROUND BRILLIANT**
Measurements **7.16 - 7.21 X 4.22 MM**

GRADING RESULTS

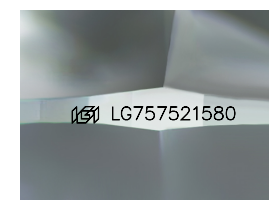
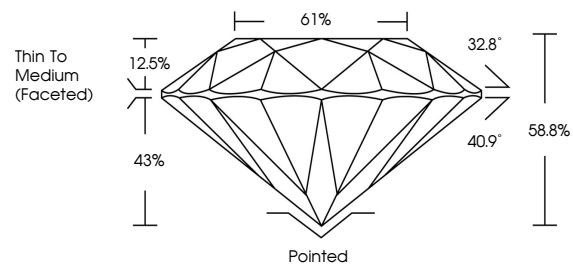
Carat Weight **1.31 CARAT**
Color Grade **FANCY VIVID BLUE**
Clarity Grade **VVS 2**
Cut Grade **EXCELLENT**

ADDITIONAL GRADING INFORMATION

Polish **EXCELLENT**
Symmetry **EXCELLENT**
Fluorescence **NONE**
Inscription(s) **IGI LG757521580**

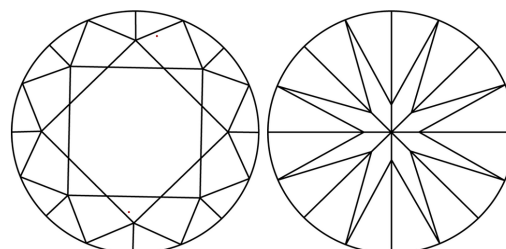
Comments: This Laboratory Grown Diamond was created by Chemical Vapor Deposition (CVD) growth process.
Indications of post-growth treatment.

PROPORTIONS



Sample Image Used

CLARITY CHARACTERISTICS



KEY TO SYMBOLS

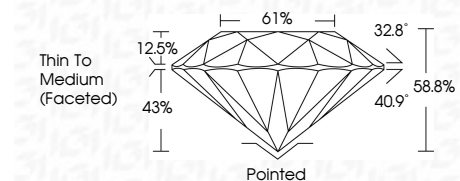
Red symbols indicate internal characteristics.
Green symbols indicate external characteristics.

COLOR

D E F G H I J Faint Very Light Light

CLARITY

FL	IF	VVS ¹⁻²	VS ¹⁻²	SI ¹⁻²	I ¹⁻³
Flawless	Internally Flawless	Very Very Slightly Included	Very Slightly Included	Slightly Included	Included



ADDITIONAL GRADING INFORMATION

Polish **EXCELLENT**
Symmetry **EXCELLENT**
Fluorescence **NONE**
Inscription(s) **IGI LG757521580**
Comments: This Laboratory Grown Diamond was created by Chemical Vapor Deposition (CVD) growth process.
Indications of post-growth treatment.



December 17, 2025
IGI Report No **LG757521580**
ROUND BRILLIANT
1.31 CARAT
Carat Weight
Color Grade **FANCY VIVID BLUE**
Clarity Grade **VVS 2**
Cut Grade **EXCELLENT**
Depth **58.8%**
Table **61%**
Girdle **Thin To Medium (Faceted)**
Culet **Pointed**
Polish **EXCELLENT**
Symmetry **EXCELLENT**
Fluorescence **NONE**
Inscriptions(s) **IGI LG757521580**
Comments: This Laboratory Grown Diamond was created by Chemical Vapor Deposition (CVD) growth process.
Indications of post-growth treatment.