



**ELECTRONIC COPY**

LG757521573  
Report verification at igi.org



December 18, 2025

IGI Report Number **LG757521573**

Description **LABORATORY GROWN DIAMOND**

Shape and Cutting Style **EMERALD CUT**

Measurements **7.74 X 5.57 X 3.98 MM**

**GRADING RESULTS**

Carat Weight **1.82 CARAT**

Color Grade **FANCY DEEP BLUE**

Clarity Grade **VS 2**

December 18, 2025  
IGI Report Number **LG757521573**  
Description **LABORATORY GROWN DIAMOND**  
Shape and Cutting Style **EMERALD CUT**  
Measurements **7.74 X 5.57 X 3.98 MM**

**GRADING RESULTS**

Carat Weight **1.82 CARAT**

Color Grade **FANCY DEEP BLUE**

Clarity Grade **VS 2**

**ADDITIONAL GRADING INFORMATION**

Polish **EXCELLENT**

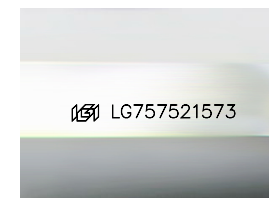
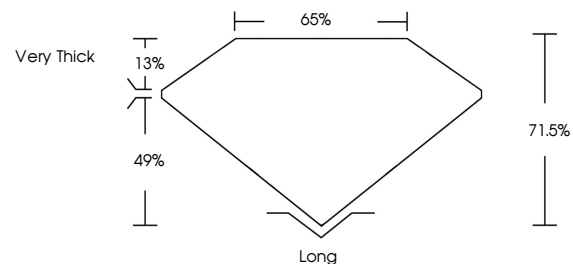
Symmetry **VERY GOOD**

Fluorescence **NONE**

Inscription(s) **LG757521573**

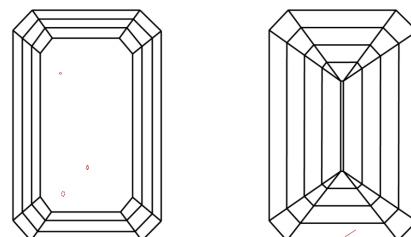
Comments: This Laboratory Grown Diamond was created by Chemical Vapor Deposition (CVD) growth process.  
Indications of post-growth treatment.

**PROPORTIONS**



Sample Image Used

**CLARITY CHARACTERISTICS**



**KEY TO SYMBOLS**

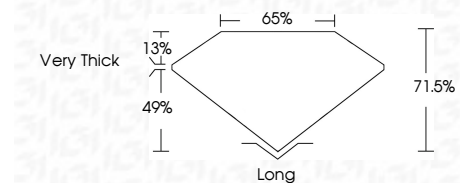
Red symbols indicate internal characteristics.  
Green symbols indicate external characteristics.

**COLOR**

D E F G H I J Faint Very Light Light

**CLARITY**

FL	IF	VS <sup>1-2</sup>	VS <sup>1-2</sup>	SI <sup>1-2</sup>	I <sup>1-3</sup>
Flawless	Internally Flawless	Very Very Slightly Included	Very Slightly Included	Slightly Included	Included



**ADDITIONAL GRADING INFORMATION**

Polish **EXCELLENT**

Symmetry **VERY GOOD**

Fluorescence **NONE**

Inscription(s) **LG757521573**

Comments: This Laboratory Grown Diamond was created by Chemical Vapor Deposition (CVD) growth process.  
Indications of post-growth treatment.



**IGI**



December 18, 2025  
IGI Report No. **LG757521573**  
**EMERALD CUT**  
1.82 CARAT  
FANCY DEEP BLUE  
VS 2  
71.05%  
65%  
Very Thick  
Long  
EXCELLENT  
VERY GOOD  
NONE  
 **LG757521573**  
Comments: This Laboratory Grown Diamond was created by Chemical Vapor Deposition (CVD) growth process.  
Indications of post-growth treatment.