



**ELECTRONIC COPY**

LG757521567  
Report verification at igi.org



December 18, 2025

IGI Report Number **LG757521567**

Description **LABORATORY GROWN DIAMOND**

Shape and Cutting Style **RECTANGULAR PRINCESS**

Measurements **5.98 X 5.62 X 3.82 MM**

**GRADING RESULTS**

Carat Weight **1.14 CARAT**

Color Grade **FANCY VIVID PINK**

Clarity Grade **VS 1**

December 18, 2025  
IGI Report Number **LG757521567**  
Description **LABORATORY GROWN DIAMOND**  
Shape and Cutting Style **RECTANGULAR PRINCESS**  
Measurements **5.98 X 5.62 X 3.82 MM**

**GRADING RESULTS**

Carat Weight **1.14 CARAT**

Color Grade **FANCY VIVID PINK**

Clarity Grade **VS 1**

**ADDITIONAL GRADING INFORMATION**

Polish **EXCELLENT**

Symmetry **EXCELLENT**

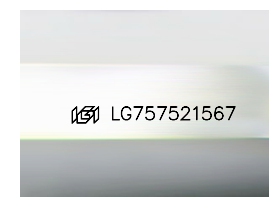
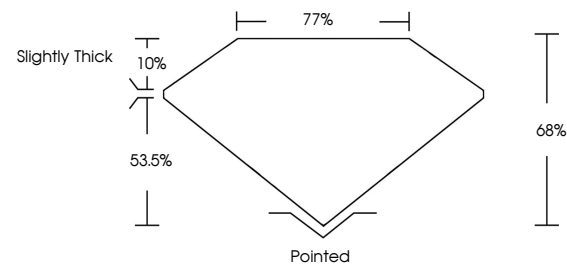
Fluorescence **STRONG**

Inscription(s) **LG757521567**

Comments: This Laboratory Grown Diamond was created by Chemical Vapor Deposition (CVD) growth process.  
Indications of post-growth treatment.

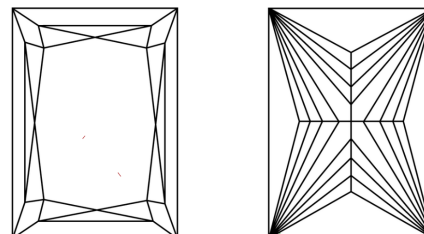
Secondary color: Orange

**PROPORTIONS**



Sample Image Used

**CLARITY CHARACTERISTICS**



**KEY TO SYMBOLS**

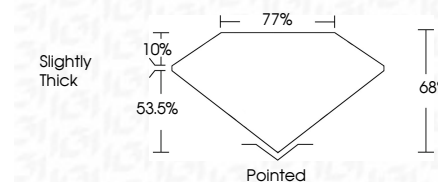
Red symbols indicate internal characteristics.  
Green symbols indicate external characteristics.

**COLOR**

D E F G H I J Faint Very Light Light

**CLARITY**

FL	IF	VS <sup>1-2</sup>	VS <sup>1-2</sup>	SI <sup>1-2</sup>	I <sup>1-3</sup>
Flawless	Internally Flawless	Very Very Slightly Included	Very Slightly Included	Slightly Included	Included



**ADDITIONAL GRADING INFORMATION**

Polish **EXCELLENT**

Symmetry **EXCELLENT**

Fluorescence **STRONG**

Inscription(s) **LG757521567**

Comments: This Laboratory Grown Diamond was created by Chemical Vapor Deposition (CVD) growth process.  
Indications of post-growth treatment.

Secondary color: Orange



December 18, 2025  
IGI Report No **LG757521567**  
**RECTANGULAR PRINCESS**  
**5.98 X 5.62 X 3.82 MM**  
Carat Weight **1.14 CARAT**  
Color Grade **FANCY VIVID PINK**  
Clarity Grade **VS 1**  
Depth **68%**  
Table **77%**  
Girdle **Slightly Thick**  
Culet **Pointed**  
Polish **EXCELLENT**  
Symmetry **EXCELLENT**  
Fluorescence **STRONG**  
Inscription(s) **LG757521567**  
Comments: This Laboratory Grown Diamond was created by Chemical Vapor Deposition (CVD) growth process.  
Indications of post-growth treatment.  
Secondary color: Orange