



ELECTRONIC COPY

LABORATORY GROWN DIAMOND REPORT

December 22, 2025	
IGI Report Number	LG757521565
Description	LABORATORY GROWN DIAMOND
Shape and Cutting Style	RECTANGULAR MODIFIED PRINCESS
Measurements	5.77 X 5.42 X 3.92 MM

GRADING RESULTS

Carat Weight	1.13 CARAT
Color Grade	FANCY INTENSE ORANGY PINK
Clarity Grade	VS 2

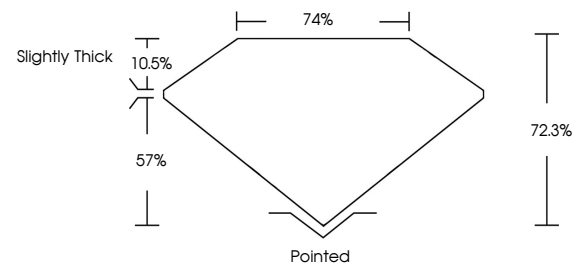
ADDITIONAL GRADING INFORMATION

Polish	EXCELLENT
Symmetry	VERY GOOD
Fluorescence	SLIGHT
Inscription(s)	 LG757521565

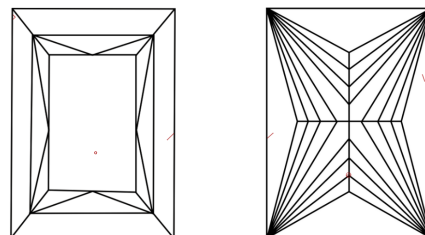
Comments: This Laboratory Grown Diamond was created by Chemical Vapor Deposition (CVD) growth process.
Indications of post-growth treatment.

LG757521565
Report verification at igi.org

PROPORTIONS

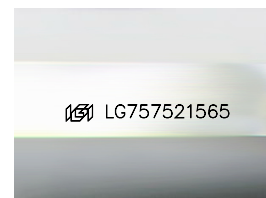


CLARITY CHARACTERISTICS



KEY TO SYMBOLS

Red symbols indicate internal characteristics.
Green symbols indicate external characteristics.



Sample Image Used

COLOR

D E F G H I J Faint Very Light Light

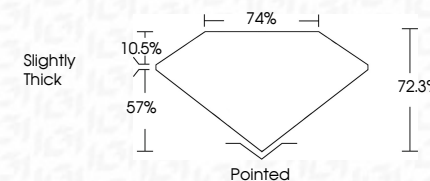
CLARITY

FL	IF	VVS ¹⁻²	VS ¹⁻²	SI ¹⁻²	I ¹⁻³
Flawless	Internally Flawless	Very Very Slightly Included	Very Slightly Included	Slightly Included	Included

LABORATORY GROWN DIAMOND REPORT



December 22, 2025	
IGI Report Number	LG757521565
Description	LABORATORY GROWN DIAMOND
Shape and Cutting Style	RECTANGULAR MODIFIED PRINCESS
Measurements	5.77 X 5.42 X 3.92 MM
GRADING RESULTS	
Carat Weight	1.13 CARAT
Color Grade	FANCY INTENSE ORANGY PINK
Clarity Grade	VS 2



ADDITIONAL GRADING INFORMATION

Polish	EXCELLENT
Symmetry	VERY GOOD
Fluorescence	SLIGHT
Inscription(s)	 LG757521565
<p>Comments: This Laboratory Grown Diamond was created by Chemical Vapor Deposition (CVD) growth process.</p> <p>Indications of post-growth treatment.</p>	



© IGI 2020, International Gemological Institute

FD - 10 20

www.igi.org



THIS DOCUMENT WAS PRODUCED WITH THE FOLLOWING SECURITY MEASURES: SPECIAL DOCUMENT PAPER, INK SCREENS, WATERMARK, BACKGROUND DESIGNS, HOLOGRAM AND OTHER SECURITY FEATURES NOT LISTED AND DO EXCEED DOCUMENT SECURITY INDUSTRY GUIDELINE

December 22, 2025	1.13 CARAT
GI Report No. LG75721565	FANCY INTENSE
RECTANGULAR MODIFIED PRINCESS	CARAT VS 2
	72.5%
	74%
	slightly thick
	Pointed
	EXCELLENT
	VERY GOOD
	SLIGHT
	681 LG75721565

Comments: This is a Very Gray Diamond was created by Chemical Vapor Deposition (CVD) growth process. Indications of post-growth treatment.