



ELECTRONIC COPY

LG757521553
Report verification at igi.org



December 22, 2025

IGI Report Number **LG757521553**

Description **LABORATORY GROWN DIAMOND**

Shape and Cutting Style **CUT CORNERED
RECTANGULAR MODIFIED
BRILLIANT**

Measurements **7.17 X 6.15 X 3.89 MM**

GRADING RESULTS

Carat Weight **1.61 CARAT**

Color Grade **FANCY VIVID BLUE**

Clarity Grade **VS 1**

December 22, 2025

IGI Report Number **LG757521553**

Description **LABORATORY GROWN DIAMOND**

Shape and Cutting Style **CUT CORNERED RECTANGULAR
MODIFIED BRILLIANT**

Measurements **7.17 X 6.15 X 3.89 MM**

GRADING RESULTS

Carat Weight **1.61 CARAT**

Color Grade **FANCY VIVID BLUE**

Clarity Grade **VS 1**

ADDITIONAL GRADING INFORMATION

Polish **EXCELLENT**

Symmetry **EXCELLENT**

Fluorescence **NONE**

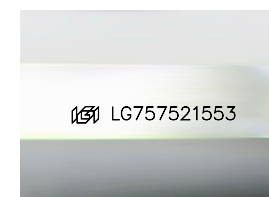
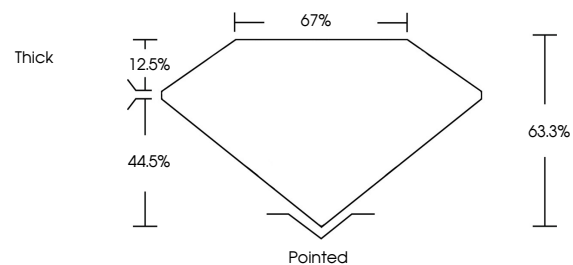
Inscription(s) **IGI LG757521553**

Comments: This Laboratory Grown Diamond was created by Chemical Vapor Deposition (CVD) growth process.

Indications of post-growth treatment.

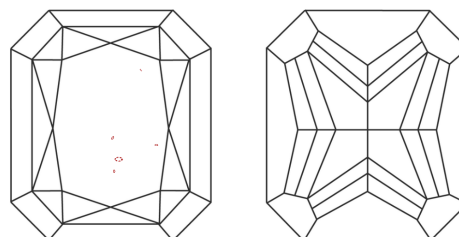
Secondary color: Green

PROPORTIONS



Sample Image Used

CLARITY CHARACTERISTICS



KEY TO SYMBOLS

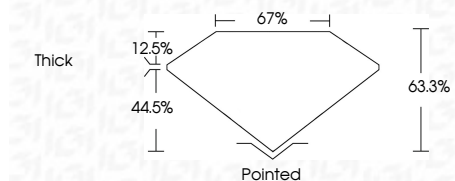
Red symbols indicate internal characteristics.
Green symbols indicate external characteristics.

COLOR

D E F G H I J Faint Very Light Light

CLARITY

FL	IF	VS ¹⁻²	VS ¹⁻²	SI ¹⁻²	I ¹⁻³
Flawless	Internally Flawless	Very Very Slightly Included	Very Slightly Included	Slightly Included	Included



ADDITIONAL GRADING INFORMATION

Polish **EXCELLENT**

Symmetry **EXCELLENT**

Fluorescence **NONE**

Inscription(s) **IGI LG757521553**

Comments: This Laboratory Grown Diamond was created by Chemical Vapor Deposition (CVD) growth process.

Indications of post-growth treatment.

Secondary color: Green



IGI



December 22, 2025
IGI Report No LG757521553
CUT CORNERED RECT. MODIFIED BRILLIANT
7.17 X 6.15 X 3.89 MM
1.61 CARAT
FANCY VIVID BLUE
VS 1
63.3%
67%
Thick
Pointed
EXCELLENT
EXCELLENT
NONE
IGI LG757521553

Comments: This Laboratory Grown Diamond was created by Chemical Vapor Deposition (CVD) growth process. Indications of post-growth treatment. Secondary color: Green