



ELECTRONIC COPY

LG757521540
Report verification at igi.org



December 18, 2025
IGI Report Number **LG757521540**
Description **LABORATORY GROWN DIAMOND**
Shape and Cutting Style **CUSHION MODIFIED BRILLIANT**
Measurements **5.87 X 5.49 X 3.75 MM**
GRADING RESULTS
Carat Weight **1.05 CARAT**
Color Grade **FANCY BROWN PINK**
Clarity Grade **VS 1**

LABORATORY GROWN DIAMOND REPORT

December 18, 2025
IGI Report Number **LG757521540**
Description **LABORATORY GROWN DIAMOND**
Shape and Cutting Style **CUSHION MODIFIED BRILLIANT**
Measurements **5.87 X 5.49 X 3.75 MM**

GRADING RESULTS

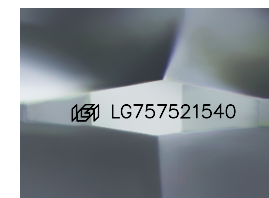
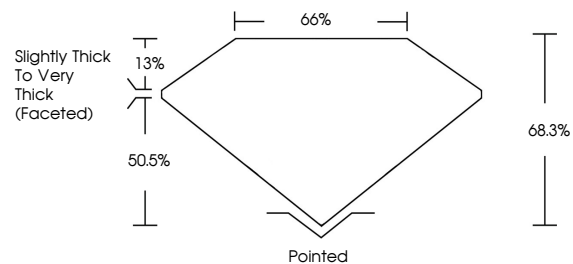
Carat Weight **1.05 CARAT**
Color Grade **FANCY BROWN PINK**
Clarity Grade **VS 1**

ADDITIONAL GRADING INFORMATION

Polish **EXCELLENT**
Symmetry **EXCELLENT**
Fluorescence **SLIGHT**
Inscription(s) **IGI LG757521540**

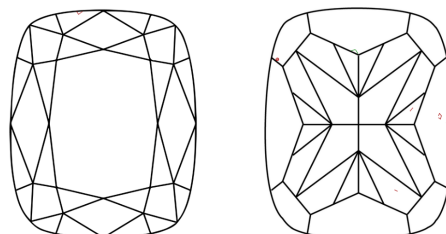
Comments: This Laboratory Grown Diamond was created by Chemical Vapor Deposition (CVD) growth process.
Indications of post-growth treatment.

PROPORTIONS



Sample Image Used

CLARITY CHARACTERISTICS



KEY TO SYMBOLS

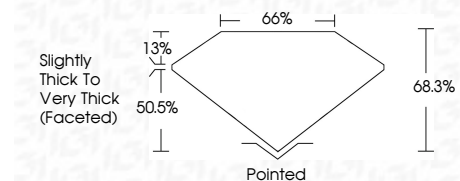
Red symbols indicate internal characteristics.
Green symbols indicate external characteristics.

COLOR

D E F G H I J Faint Very Light Light

CLARITY

FL	IF	VS ¹⁻²	VS ¹⁻²	SI ¹⁻²	I ¹⁻³
Flawless	Internally Flawless	Very Very Slightly Included	Very Slightly Included	Slightly Included	Included



ADDITIONAL GRADING INFORMATION

Polish **EXCELLENT**
Symmetry **EXCELLENT**
Fluorescence **SLIGHT**
Inscription(s) **IGI LG757521540**
Comments: This Laboratory Grown Diamond was created by Chemical Vapor Deposition (CVD) growth process.
Indications of post-growth treatment.



December 18, 2025
IGI Report No LG757521540
CUSHION MODIFIED BRILLIANT
5.87 X 5.49 X 3.75 MM
1.05 CARAT
FANCY BROWN PINK
VS 1
68.3%
50.5%
Slightly Thick To Very Thick (Faceted)
Pointed
EXCELLENT
EXCELLENT
SLIGHT
IGI LG757521540
Comments: This Laboratory Grown Diamond was created by Chemical Vapor Deposition (CVD) growth process.
Indications of post-growth treatment.