



ELECTRONIC COPY

LG757521537
Report verification at igi.org



December 18, 2025
IGI Report Number **LG757521537**
Description **LABORATORY GROWN DIAMOND**
Shape and Cutting Style **CUT CORNERED
RECTANGULAR MODIFIED
BRILLIANT**
Measurements **6.97 X 4.72 X 3.39 MM**
GRADING RESULTS
Carat Weight **1.04 CARAT**
Color Grade **FANCY PINK BROWN**
Clarity Grade **VS 1**

December 18, 2025
IGI Report Number **LG757521537**
Description **LABORATORY GROWN DIAMOND**
Shape and Cutting Style **CUT CORNERED RECTANGULAR
MODIFIED BRILLIANT**
Measurements **6.97 X 4.72 X 3.39 MM**

GRADING RESULTS

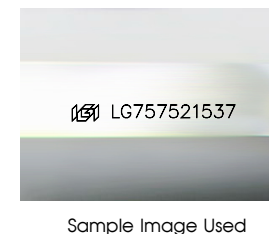
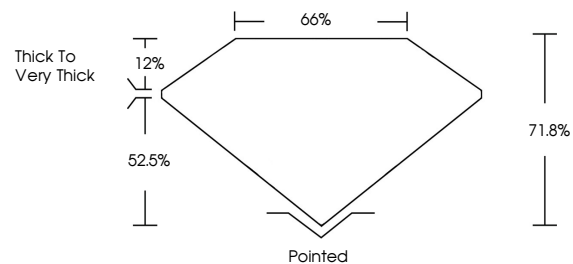
Carat Weight **1.04 CARAT**
Color Grade **FANCY PINK BROWN**
Clarity Grade **VS 1**

ADDITIONAL GRADING INFORMATION

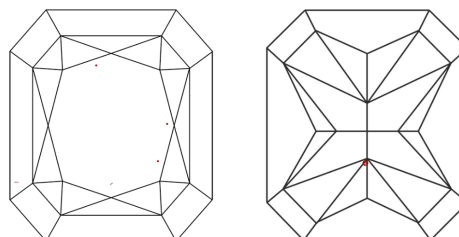
Polish **VERY GOOD**
Symmetry **GOOD**
Fluorescence **SLIGHT**
Inscription(s) **IGI LG757521537**

Comments: This Laboratory Grown Diamond was created by Chemical Vapor Deposition (CVD) growth process. Indications of post-growth treatment.

PROPORTIONS



CLARITY CHARACTERISTICS



KEY TO SYMBOLS

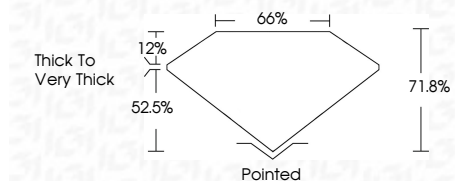
Red symbols indicate internal characteristics.
Green symbols indicate external characteristics.

COLOR

D E F G H I J Faint Very Light Light

CLARITY

FL	IF	VS ¹⁻²	VS ¹⁻²	SI ¹⁻²	I ¹⁻³
Flawless	Internally Flawless	Very Very Slightly Included	Very Slightly Included	Slightly Included	Included



ADDITIONAL GRADING INFORMATION

Polish **VERY GOOD**
Symmetry **GOOD**
Fluorescence **SLIGHT**
Inscription(s) **IGI LG757521537**
Comments: This Laboratory Grown Diamond was created by Chemical Vapor Deposition (CVD) growth process. Indications of post-growth treatment.



December 18, 2025
IGI Report No LG757521537
CUT CORNERED RECT. MODIFIED BRILLIANT
6.97 X 4.72 X 3.39 MM
1.04 CARAT
FANCY PINK BROWN
VS 1
71.8%
52.5%
Thick to Very Thick
Pointed
VERY GOOD
GOOD
SLIGHT
IGI LG757521537
Comments: This Laboratory Grown Diamond was created by Chemical Vapor Deposition (CVD) growth process. Indications of post-growth treatment.