



**ELECTRONIC COPY**

## LABORATORY GROWN DIAMOND REPORT

December 18, 2025	
IGI Report Number	LG757521535
Description	LABORATORY GROWN DIAMOND
Shape and Cutting Style	ROUND BRILLIANT
Measurements	6.42 - 6.49 X 3.98 MM

## GRADING RESULTS

Carat Weight	1.04 CARAT
Color Grade	FANCY DEEP ORANGE
Clarity Grade	SI 2
Cut Grade	EXCELLENT

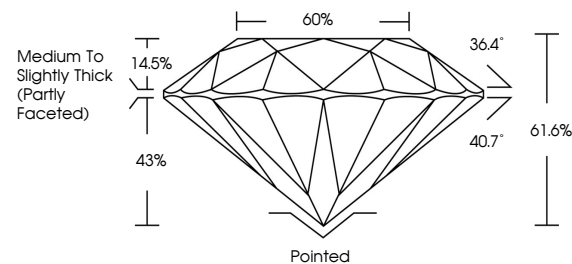
### ADDITIONAL GRADING INFORMATION

Polish	EXCELLENT
Symmetry	EXCELLENT
Fluorescence	NONE
Inscription(s)	 LG757521535

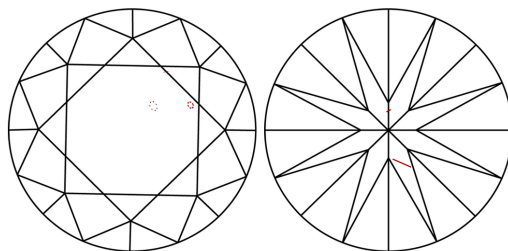
Comments: This Laboratory Grown Diamond was created by Chemical Vapor Deposition (CVD) growth process.  
Indications of post-growth treatment.

LG757521535  
Report verification at [igi.org](https://igi.org)

## PROPORTIONS

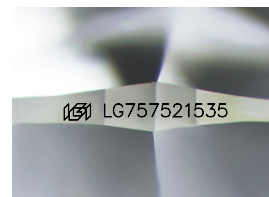


## CLARITY CHARACTERISTICS



## KEY TO SYMBOLS

Red symbols indicate internal characteristics.  
Green symbols indicate external characteristics.



Sample Image Used

**COLOR**

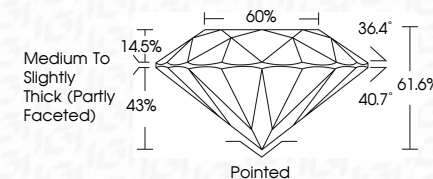
D E F G H I J Faint Very Light Light

## CLARITY

FL	IF	VVS <sup>1-2</sup>	VS <sup>1-2</sup>	SI <sup>1-2</sup>	I <sup>1-3</sup>
Flawless	Internally Flawless	Very Very Slightly Included	Very Slightly Included	Slightly Included	Included



December 18, 2025	
IGI Report Number	LG757521535
Description	LABORATORY GROWN DIAMOND
Shape and Cutting Style	ROUND BRILLIANT
Measurements	6.42 - 6.49 X 3.98 MM
GRADING RESULTS	
Carat Weight	1.04 CARAT
Color Grade	FANCY DEEP ORANGE
Clarity Grade	SI 2
Cut Grade	EXCELLENT



### ADDITIONAL GRADING INFORMATION

Polish	EXCELLENT
Symmetry	EXCELLENT
Fluorescence	NONE
Inscription(s)	 LG757521535
<p>Comments: This Laboratory Grown Diamond was created by Chemical Vapor Deposition (CVD) growth process.</p> <p>Indications of post-growth treatment.</p>	



© IGI 2020, International Gemological Institute

FD - 10 20



THIS DOCUMENT WAS PRODUCED WITH THE FOLLOWING SECURITY MEASURES: SPECIAL DOCUMENT PAPER, INK SCREENS, WATERMARK, BACKGROUND DESIGNS, HOLOGRAM AND OTHER SECURITY FEATURES NOT LISTED AND DO EXCEED DOCUMENT SECURITY INDUSTRY GUIDELINE

December 18, 2025  
IGI Report No LG757521535  
ROUND BRILLIANT

<b>6.42 - 6.49 X 3.98 MM</b>	<b>1.04 CARAT</b>
Carat Weight	<b>FANCY DEEP ORANGE</b>
Color Grade	<b>SI 2</b>
Clarity Grade	<b>EXCELLENT</b>
Cut Grade	<b>61.6%</b>
Depth	<b>60%</b>
Table	<b>Medium To Slightly</b>
Girdle	<b>Twisted Girdle, Ex</b>

Culet	Pointed
Polish	EXCELLENT
Symmetry	EXCELLENT
Fluorescence	NONE

**Comments:**  
This Laboratory Grown Diamond was created by Chemical Vapor Deposition (CVD) growth process.