



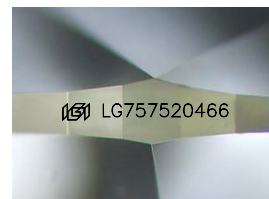
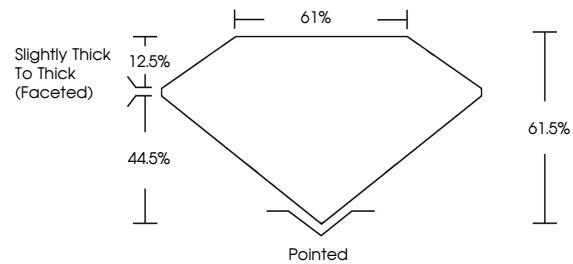
**INTERNATIONAL
GEMOLOGICAL
INSTITUTE**

ELECTRONIC COPY

LABORATORY GROWN DIAMOND REPORT

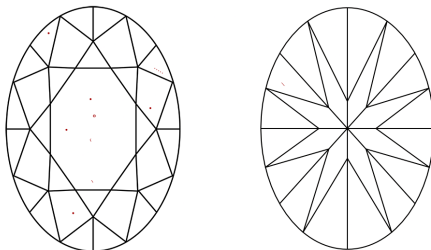
LG757520466
Report verification at igi.org

PROPORTIONS



Sample Image Used

CLARITY CHARACTERISTICS



KEY TO SYMBOLS

Red symbols indicate internal characteristics.
Green symbols indicate external characteristics.

COLOR

D E F G H I J Faint Very Light Light

CLARITY

| FL | IF | VVS ¹⁻² | VS ¹⁻² | SI ¹⁻² | I ¹⁻³ |
|----------|---------------------|-----------------------------|------------------------|-------------------|------------------|
| Flawless | Internally Flawless | Very Very Slightly Included | Very Slightly Included | Slightly Included | Included |

LABORATORY GROWN DIAMOND REPORT



January 8, 2026

IGI Report Number **LG757520466**

| | |
|-------------|--------------------------|
| Description | LABORATORY GROWN DIAMOND |
|-------------|--------------------------|

Shape and Cutting Style **OVAL BRILLIANT**

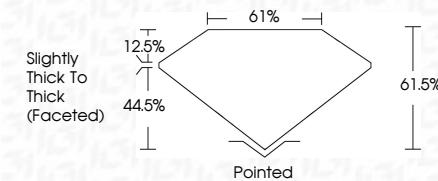
Measurements 13.92 X 9.06 X 5.57 MM

GRADING RESULTS

Carat Weight **4.54 CARATS**

| | |
|-------------|---|
| Color Grade | F |
|-------------|---|

Clarity Grade VS 1



ADDITIONAL GRADING INFORMATION

Polish **EXCELLENT**Symmetry **EXCELLENT**Fluorescence **NONE**Inscription(s)  LG757520466

Comments: This Laboratory Grown Diamond was created by Chemical Vapor Deposition (CVD) growth process.
Type IIa



IG



© IGI 2020, International Gemological Institute

FD - 10 20



THIS DOCUMENT WAS PRODUCED WITH THE FOLLOWING SECURITY MEASURES: SPECIAL DOCUMENT PAPER, INK SCREENS, WATERMARK BACKGROUND DESIGNS, HOLOGRAM AND OTHER SECURITY FEATURES NOT LISTED AND DO EXCEED DOCUMENT SECURITY INDUSTRY GUIDELINES.

January 8, 2026
IGI Report No LG757520466
OVAL BRILLIANT

| | |
|----------------|----------------------------------|
| Carat Weight | 4.54 CARATS |
| Color Grade | F |
| Clarity Grade | VS 1 |
| Depth | 61.6% |
| Table | 61% |
| Girdle | Slightly Thick To Thick (graded) |
| Culet | Pointed |
| Polish | EXCELLENT |
| Symmetry | EXCELLENT |
| Fluorescence | NONE |
| Inscription(s) | 18115715720465 |

Comments:
This Laboratory Grown Diamond was created by Chemical Vapor Deposition (CVD) growth process.
Type IIa

www.igi.org