



# INTERNATIONAL GEMOLOGICAL INSTITUTE

ELECTRONIC COPY

## LABORATORY GROWN DIAMOND REPORT

January 9, 2026  
IGI Report Number **LG757520227**  
Description **LABORATORY GROWN DIAMOND**  
Shape and Cutting Style **MARQUISE MODIFIED BRILLIANT**  
Measurements **7.79 X 4.29 X 2.94 MM**

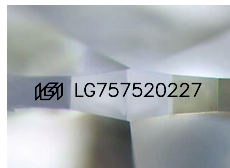
### GRADING RESULTS

Carat Weight **0.69 CARAT**  
Color Grade **FANCY VIVID GREEN**  
Clarity Grade **VS 2**

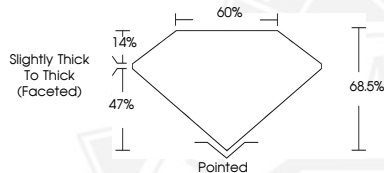
### ADDITIONAL GRADING INFORMATION

Polish **VERY GOOD**  
Symmetry **VERY GOOD**  
Fluorescence **NONE**  
Inscription(s) **IGI LG757520227**

Comments: This Laboratory Grown Diamond was created by High Pressure High Temperature (HPHT) growth process.  
Indications of post-growth treatment.



Sample Image Used



January 9, 2026

IGI Report Number **LG757520227**  
**MARQUISE MODIFIED BRILLIANT**  
**LABORATORY GROWN DIAMOND**  
**7.79 X 4.29 X 2.94 MM**

Carat Weight **0.69 CARAT**  
Color Grade **FANCY VIVID GREEN**  
Clarity Grade **VS 2**  
Polish **VERY GOOD**  
Symmetry **VERY GOOD**  
Fluorescence **NONE**  
Inscription(s) **IGI LG757520227**

Comments: This Laboratory Grown Diamond was created by High Pressure High Temperature (HPHT) growth process. Indications of post-growth treatment.



January 9, 2026

IGI Report Number **LG757520227**  
**MARQUISE MODIFIED BRILLIANT**  
**LABORATORY GROWN DIAMOND**  
**7.79 X 4.29 X 2.94 MM**

Carat Weight **0.69 CARAT**  
Color Grade **FANCY VIVID GREEN**  
Clarity Grade **VS 2**  
Polish **VERY GOOD**  
Symmetry **VERY GOOD**  
Fluorescence **NONE**  
Inscription(s) **IGI LG757520227**

Comments: This Laboratory Grown Diamond was created by High Pressure High Temperature (HPHT) growth process. Indications of post-growth treatment.



THIS DOCUMENT WAS PRODUCED WITH THE FOLLOWING SECURITY MEASURES: SPECIAL DOCUMENT PAPER, INK SCREENS, WATERMARK, BACKGROUND DESIGNS, HOLOGRAM AND OTHER SECURITY FEATURES NOT LISTED AND DO EXCEED DOCUMENT SECURITY INDUSTRY GUIDELINES.

For terms & conditions and to verify this report, please visit [www.igi.org](http://www.igi.org)