



# INTERNATIONAL GEMOLOGICAL INSTITUTE

ELECTRONIC COPY



January 8, 2026

IGI Report Number **LG757520208**  
**MARQUISE MODIFIED BRILLIANT**  
**LABORATORY GROWN DIAMOND**  
**7.37 X 4.04 X 2.60 MM**

Carat Weight **0.53 CARAT**  
Color Grade **FANCY VIVID GREEN**  
Clarity Grade **VS 1**  
Polish **VERY GOOD**  
Symmetry **VERY GOOD**  
Fluorescence **NONE**  
Inscription(s) **IGI LG757520208**

Comments: This Laboratory Grown Diamond was created by High Pressure High Temperature (HPHT) growth process. Indications of post-growth treatment.

## LABORATORY GROWN DIAMOND REPORT

January 8, 2026

IGI Report Number

**LG757520208**

Description

**LABORATORY GROWN DIAMOND**

Shape and Cutting Style

**MARQUISE MODIFIED BRILLIANT**

Measurements

**7.37 X 4.04 X 2.60 MM**

### GRADING RESULTS

Carat Weight

**0.53 CARAT**

Color Grade

**FANCY VIVID GREEN**

Clarity Grade

**VS 1**

### ADDITIONAL GRADING INFORMATION

Polish

**VERY GOOD**

Symmetry

**VERY GOOD**

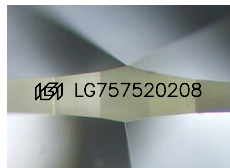
Fluorescence

**NONE**

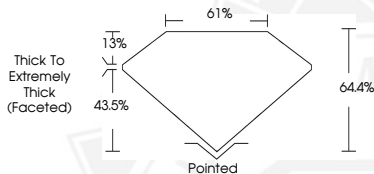
Inscription(s)

**IGI LG757520208**

Comments: This Laboratory Grown Diamond was created by High Pressure High Temperature (HPHT) growth process. Indications of post-growth treatment.



Sample Image Used



January 8, 2026

IGI Report Number **LG757520208**  
**MARQUISE MODIFIED BRILLIANT**  
**LABORATORY GROWN DIAMOND**  
**7.37 X 4.04 X 2.60 MM**

Carat Weight **0.53 CARAT**  
Color Grade **FANCY VIVID GREEN**  
Clarity Grade **VS 1**  
Polish **VERY GOOD**  
Symmetry **VERY GOOD**  
Fluorescence **NONE**  
Inscription(s) **IGI LG757520208**

Comments: This Laboratory Grown Diamond was created by High Pressure High Temperature (HPHT) growth process. Indications of post-growth treatment.



THIS DOCUMENT WAS PRODUCED WITH THE FOLLOWING SECURITY MEASURES: SPECIAL DOCUMENT PAPER, INK SCREENS, WATERMARK, BACKGROUND DESIGNS, HOLOGRAM AND OTHER SECURITY FEATURES NOT LISTED AND DO EXCEED DOCUMENT SECURITY INDUSTRY GUIDELINES.

For terms & conditions and to verify this report, please visit [www.igi.org](http://www.igi.org)