



LABORATORY GROWN DIAMOND REPORT

January 9, 2026
 IGI Report Number **LG757520017**
 Description **LABORATORY GROWN DIAMOND**
 Shape and Cutting Style **PEAR MODIFIED BRILLIANT**
 Measurements **6.65 X 4.55 X 3.03 MM**

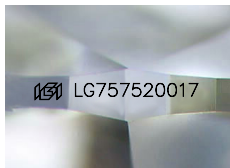
GRADING RESULTS

Carat Weight **0.69 CARAT**
 Color Grade **FANCY INTENSE BLUE**
 Clarity Grade **VS 1**

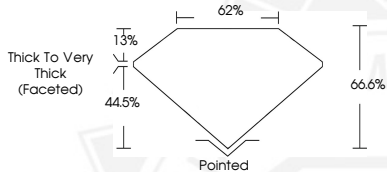
ADDITIONAL GRADING INFORMATION

Polish **VERY GOOD**
 Symmetry **GOOD**
 Fluorescence **NONE**
 Inscription(s) **IGI LG757520017**

Comments: This Laboratory Grown Diamond was created by High Pressure High Temperature (HPHT) growth process. Indications of post-growth treatment.



Sample Image Used



January 9, 2026
 IGI Report Number **LG757520017**
PEAR MODIFIED BRILLIANT
LABORATORY GROWN DIAMOND
6.65 X 4.55 X 3.03 MM
 Carat Weight **0.69 CARAT**
 Color Grade **FANCY INTENSE BLUE**
 Clarity Grade **VS 1**
 Polish **VERY GOOD**
 Symmetry **GOOD**
 Fluorescence **NONE**
 Inscription(s) **IGI LG757520017**

Comments: This Laboratory Grown Diamond was created by High Pressure High Temperature (HPHT) growth process. Indications of post-growth treatment.



January 9, 2026
 IGI Report Number **LG757520017**
PEAR MODIFIED BRILLIANT
LABORATORY GROWN DIAMOND
6.65 X 4.55 X 3.03 MM
 Carat Weight **0.69 CARAT**
 Color Grade **FANCY INTENSE BLUE**
 Clarity Grade **VS 1**
 Polish **VERY GOOD**
 Symmetry **GOOD**
 Fluorescence **NONE**
 Inscription(s) **IGI LG757520017**

Comments: This Laboratory Grown Diamond was created by High Pressure High Temperature (HPHT) growth process. Indications of post-growth treatment.



THIS DOCUMENT WAS PRODUCED WITH THE FOLLOWING SECURITY MEASURES: SPECIAL DOCUMENT PAPER, INK SCREENS, WATERMARK, BACKGROUND DESIGNS, HOLOGRAM AND OTHER SECURITY FEATURES NOT LISTED AND DO EXCEED DOCUMENT SECURITY INDUSTRY GUIDELINES.