



January 9, 2026

IGI Report Number LG757520014
PEAR MODIFIED BRILLIANT
LABORATORY GROWN DIAMOND
6.15 X 3.82 X 2.39 MM

Carat Weight	0.40 CARAT
Color Grade	FANCY BLUE
Clarity Grade	VVS 2
Polish	VERY GOOD
Symmetry	VERY GOOD
Fluorescence	NONE
Inscription(s)	IGI LG757520014

Comments: This Laboratory Grown Diamond was created by High Pressure High Temperature (HPHT) growth process. Indications of post-growth treatment.

LABORATORY GROWN DIAMOND REPORT

January 9, 2026
IGI Report Number **LG757520014**
Description **LABORATORY GROWN DIAMOND**
Shape and Cutting Style **PEAR MODIFIED BRILLIANT**
Measurements **6.15 X 3.82 X 2.39 MM**

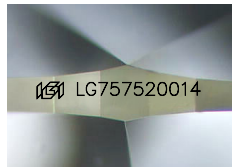
GRADING RESULTS

Carat Weight **0.40 CARAT**
Color Grade **FANCY BLUE**
Clarity Grade **VVS 2**

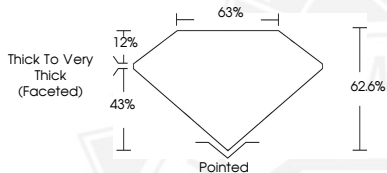
ADDITIONAL GRADING INFORMATION

Polish **VERY GOOD**
Symmetry **VERY GOOD**
Fluorescence **NONE**
Inscription(s) **IGI LG757520014**

Comments: This Laboratory Grown Diamond was created by High Pressure High Temperature (HPHT) growth process. Indications of post-growth treatment.



Sample Image Used



January 9, 2026

IGI Report Number LG757520014
PEAR MODIFIED BRILLIANT
LABORATORY GROWN DIAMOND
6.15 X 3.82 X 2.39 MM

Carat Weight	0.40 CARAT
Color Grade	FANCY BLUE
Clarity Grade	VVS 2
Polish	VERY GOOD
Symmetry	VERY GOOD
Fluorescence	NONE
Inscription(s)	IGI LG757520014

Comments: This Laboratory Grown Diamond was created by High Pressure High Temperature (HPHT) growth process. Indications of post-growth treatment.



THIS DOCUMENT WAS PRODUCED WITH THE FOLLOWING SECURITY MEASURES: SPECIAL DOCUMENT PAPER, INK SCREENS, WATERMARK, BACKGROUND DESIGNS, HOLOGRAM AND OTHER SECURITY FEATURES NOT LISTED AND DO EXCEED DOCUMENT SECURITY INDUSTRY GUIDELINES.