



# INTERNATIONAL GEMOLOGICAL INSTITUTE

ELECTRONIC COPY

## LABORATORY GROWN DIAMOND REPORT

January 6, 2026

IGI Report Number

LG757519956

Description

LABORATORY GROWN DIAMOND

Shape and Cutting Style

OVAL MODIFIED BRILLIANT

Measurements

6.79 X 4.78 X 3.15 MM

### GRADING RESULTS

Carat Weight

0.82 CARAT

Color Grade

FANCY BLUE

Clarity Grade

SI 1

### ADDITIONAL GRADING INFORMATION

Polish

VERY GOOD

Symmetry

VERY GOOD

Fluorescence

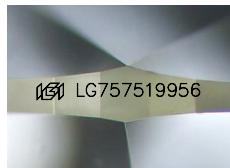
NONE

Inscription(s)

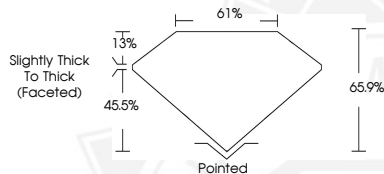
IGI LG757519956

Comments: As Grown - No indication of post-growth treatment.

This Laboratory Grown Diamond was created by High Pressure High Temperature (HPHT) growth process.



Sample Image Used



January 6, 2026

IGI Report Number LG757519956

OVAL MODIFIED BRILLIANT

LABORATORY GROWN DIAMOND

6.79 X 4.78 X 3.15 MM

Carat Weight 0.82 CARAT

Color Grade FANCY BLUE

Clarity Grade SI 1

Polish VERY GOOD

Symmetry VERY GOOD

Fluorescence NONE

Inscription(s) IGI LG757519956

Comments: As Grown - No indication of post-growth treatment. This Laboratory Grown Diamond was created by High Pressure High Temperature (HPHT) growth process.



January 6, 2026

IGI Report Number LG757519956

OVAL MODIFIED BRILLIANT

LABORATORY GROWN DIAMOND

6.79 X 4.78 X 3.15 MM

Carat Weight 0.82 CARAT

Color Grade FANCY BLUE

Clarity Grade SI 1

Polish VERY GOOD

Symmetry VERY GOOD

Fluorescence NONE

Inscription(s) IGI LG757519956

Comments: As Grown - No indication of post-growth treatment. This Laboratory Grown Diamond was created by High Pressure High Temperature (HPHT) growth process.



THIS DOCUMENT WAS PRODUCED WITH THE FOLLOWING SECURITY MEASURES: SPECIAL DOCUMENT PAPER, INK SCREENS, WATERMARK, BACKGROUND DESIGNS, HOLOGRAM AND OTHER SECURITY FEATURES NOT LISTED AND DO EXCEED DOCUMENT SECURITY INDUSTRY GUIDELINES.

For terms & conditions and to verify this report, please visit [www.igi.org](http://www.igi.org)