



**ELECTRONIC COPY**

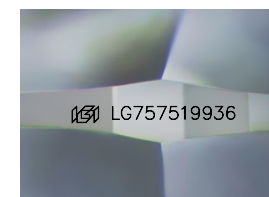
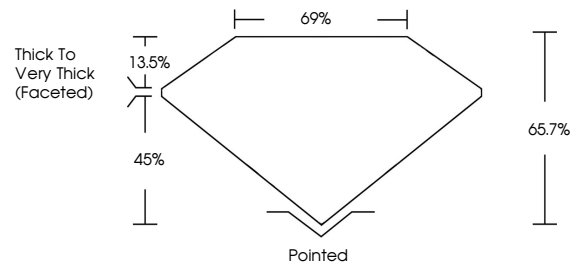
LG757519936  
Report verification at igi.org



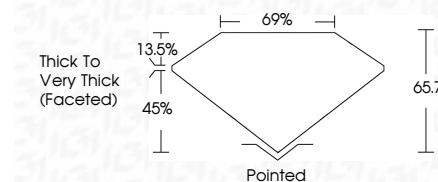
January 7, 2026  
IGI Report Number **LG757519936**  
Description **LABORATORY GROWN DIAMOND**  
Shape and Cutting Style **CUSHION MODIFIED BRILLIANT**  
Measurements **8.82 X 7.52 X 4.94 MM**  
**GRADING RESULTS**  
Carat Weight **3.11 CARATS**  
Color Grade **FANCY VIVID PINK**  
Clarity Grade **VVS 2**

January 7, 2026  
IGI Report Number **LG757519936**  
Description **LABORATORY GROWN DIAMOND**  
Shape and Cutting Style **CUSHION MODIFIED BRILLIANT**  
Measurements **8.82 X 7.52 X 4.94 MM**  
**GRADING RESULTS**  
Carat Weight **3.11 CARATS**  
Color Grade **FANCY VIVID PINK**  
Clarity Grade **VVS 2**

**PROPORTIONS**



Sample Image Used



**ADDITIONAL GRADING INFORMATION**

Polish **GOOD**  
Symmetry **FAIR**  
Fluorescence **SLIGHT**  
Inscription(s) **IGI LG757519936**

Comments: This Laboratory Grown Diamond was created by Chemical Vapor Deposition (CVD) growth process. Indications of post-growth treatment.

**COLOR**

D E F G H I J Faint Very Light Light

**CLARITY**

FL	IF	VVS <sup>1-2</sup>	VS <sup>1-2</sup>	SI <sup>1-2</sup>	I <sup>1-3</sup>
Flawless	Internally Flawless	Very Very Slightly Included	Very Slightly Included	Slightly Included	Included

**ADDITIONAL GRADING INFORMATION**

Polish **GOOD**  
Symmetry **FAIR**  
Fluorescence **SLIGHT**  
Inscription(s) **IGI LG757519936**

Comments: This Laboratory Grown Diamond was created by Chemical Vapor Deposition (CVD) growth process. Indications of post-growth treatment.



**IGI**



January 7, 2026  
IGI Report No **LG757519936**  
**CUSHION MODIFIED BRILLIANT**  
**3.11 CARATS**  
Carat Weight **FANCY VIVID PINK**  
Color Grade **VVS 2**  
Clarity Grade **65.7%**  
Depth **69%**  
Table  
Girdle  
Culet  
Polish **Pointed**  
Symmetry **GOOD**  
Fluorescence **FAIR**  
Inscription(s) **SLIGHT**  
**IGI LG757519936**

Comments: This Laboratory Grown Diamond was created by Chemical Vapor Deposition (CVD) growth process. Indications of post-growth treatment.