



**ELECTRONIC COPY**

LG757519904  
Report verification at igi.org



January 7, 2026  
IGI Report Number **LG757519904**  
Description **LABORATORY GROWN DIAMOND**  
Shape and Cutting Style **CUSHION MODIFIED BRILLIANT**  
Measurements **5.98 X 5.63 X 3.87 MM**  
**GRADING RESULTS**  
Carat Weight **1.03 CARAT**  
Color Grade **FANCY INTENSE PINK**  
Clarity Grade **SI 1**

**LABORATORY GROWN DIAMOND REPORT**

January 7, 2026  
IGI Report Number **LG757519904**  
Description **LABORATORY GROWN DIAMOND**  
Shape and Cutting Style **CUSHION MODIFIED BRILLIANT**  
Measurements **5.98 X 5.63 X 3.87 MM**

**GRADING RESULTS**

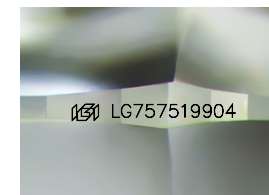
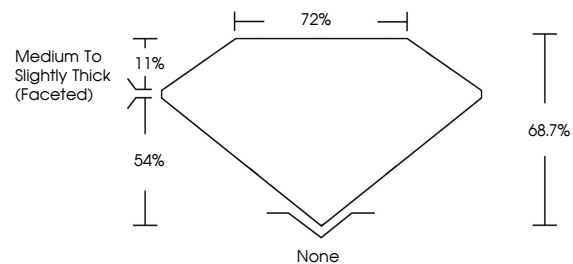
Carat Weight **1.03 CARAT**  
Color Grade **FANCY INTENSE PINK**  
Clarity Grade **SI 1**

**ADDITIONAL GRADING INFORMATION**

Polish **VERY GOOD**  
Symmetry **EXCELLENT**  
Fluorescence **SLIGHT**  
Inscription(s) **LG757519904**

Comments: This Laboratory Grown Diamond was created by Chemical Vapor Deposition (CVD) growth process. Indications of post-growth treatment.

**PROPORTIONS**



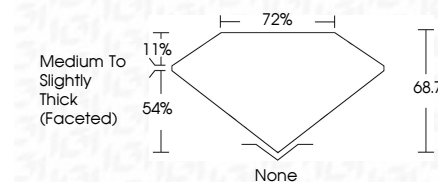
Sample Image Used

**COLOR**

D E F G H I J Faint Very Light Light

**CLARITY**

FL	IF	VS <sup>1-2</sup>	VS <sup>1-2</sup>	SI <sup>1-2</sup>	I <sup>1-3</sup>
Flawless	Internally Flawless	Very Very Slightly Included	Very Slightly Included	Slightly Included	Included



**ADDITIONAL GRADING INFORMATION**

Polish **VERY GOOD**  
Symmetry **EXCELLENT**  
Fluorescence **SLIGHT**  
Inscription(s) **LG757519904**  
Comments: This Laboratory Grown Diamond was created by Chemical Vapor Deposition (CVD) growth process. Indications of post-growth treatment.



January 7, 2026  
IGI Report No **LG757519904**  
**CUSHION MODIFIED BRILLIANT**

**5.98 X 5.63 X 3.87 MM**  
**1.03 CARAT**  
**FANCY INTENSE PINK**  
**SI 1**  
**68.7%**  
**72%**  
**Medium to Slightly Thick (Faceted)**  
**None**  
**VERY GOOD**  
**EXCELLENT**  
**SLIGHT**  
**IGI LG757519904**

Comments: This Laboratory Grown Diamond was created by Chemical Vapor Deposition (CVD) growth process. Indications of post-growth treatment.