



ELECTRONIC COPY

LG757519869
Report verification at igi.org



January 7, 2026
IGI Report Number **LG757519869**
Description **LABORATORY GROWN DIAMOND**
Shape and Cutting Style **ROUND BRILLIANT**
Measurements **12.29 - 12.40 X 7.40 MM**
GRADING RESULTS
Carat Weight **7.00 CARATS**
Color Grade **LIGHT BROWNISH YELLOW**
Clarity Grade **VS 1**
Cut Grade **IDEAL**

January 7, 2026
IGI Report Number **LG757519869**
Description **LABORATORY GROWN DIAMOND**
Shape and Cutting Style **ROUND BRILLIANT**
Measurements **12.29 - 12.40 X 7.40 MM**

GRADING RESULTS

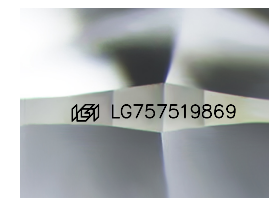
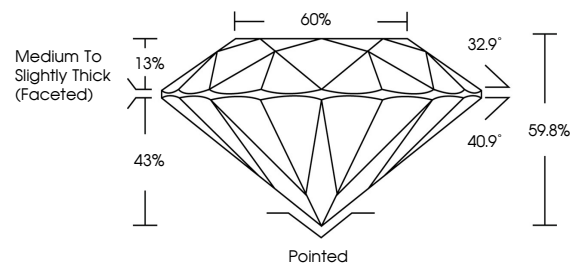
Carat Weight **7.00 CARATS**
Color Grade **LIGHT BROWNISH YELLOW**
Clarity Grade **VS 1**
Cut Grade **IDEAL**

ADDITIONAL GRADING INFORMATION

Polish **EXCELLENT**
Symmetry **EXCELLENT**
Fluorescence **VERY SLIGHT**
Inscription(s) **IGI LG757519869**

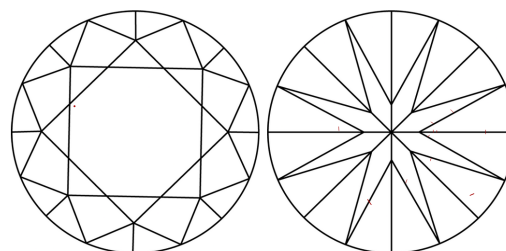
Comments: This Laboratory Grown Diamond was created by Chemical Vapor Deposition (CVD) growth process.
Indications of post-growth treatment.

PROPORTIONS



Sample Image Used

CLARITY CHARACTERISTICS



KEY TO SYMBOLS

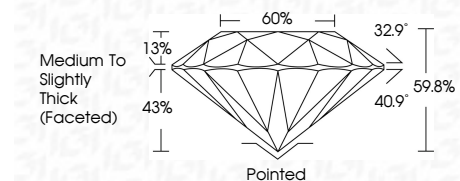
Red symbols indicate internal characteristics.
Green symbols indicate external characteristics.

COLOR

D E F G H I J Faint Very Light Light

CLARITY

FL	IF	VS ¹⁻²	VS ¹⁻²	SI ¹⁻²	I ¹⁻³
Flawless	Internally Flawless	Very Very Slightly Included	Very Slightly Included	Slightly Included	Included



ADDITIONAL GRADING INFORMATION

Polish **EXCELLENT**
Symmetry **EXCELLENT**
Fluorescence **VERY SLIGHT**
Inscription(s) **IGI LG757519869**
Comments: This Laboratory Grown Diamond was created by Chemical Vapor Deposition (CVD) growth process.
Indications of post-growth treatment.



January 7, 2026
IGI Report No LG757519869
ROUND BRILLIANT
12.29 - 12.40 X 7.40 MM
7.00 CARATS
Carat Weight
Color Grade
LIGHT BROWNISH YELLOW
Clarity Grade
VS 1
Cut Grade
IDEAL
Depth
59.8%
Table
60%
Girdle
Medium To Slightly Thick (Faceted)
Culet
Pointed
Polish
EXCELLENT
Symmetry
EXCELLENT
Fluorescence
VERY SLIGHT
Inscription(s)
IGI LG757519869
Comments: This Laboratory Grown Diamond was created by Chemical Vapor Deposition (CVD) growth process.
Indications of post-growth treatment.