



**ELECTRONIC COPY**

LG757519041  
Report verification at igi.org



December 30, 2025  
IGI Report Number **LG757519041**  
Description **LABORATORY GROWN DIAMOND**  
Shape and Cutting Style **SQUARE CUSHION MODIFIED BRILLIANT**  
Measurements **5.58 X 5.56 X 3.81 MM**  
**GRADING RESULTS**  
Carat Weight **1.07 CARAT**  
Color Grade **FANCY VIVID GREEN**  
Clarity Grade **VS 1**

December 30, 2025  
IGI Report Number **LG757519041**  
Description **LABORATORY GROWN DIAMOND**  
Shape and Cutting Style **SQUARE CUSHION MODIFIED BRILLIANT**  
Measurements **5.58 X 5.56 X 3.81 MM**

**GRADING RESULTS**

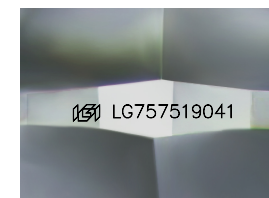
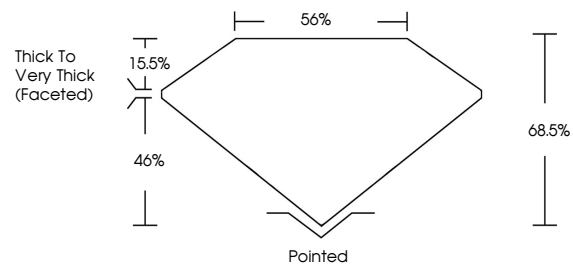
Carat Weight **1.07 CARAT**  
Color Grade **FANCY VIVID GREEN**  
Clarity Grade **VS 1**

**ADDITIONAL GRADING INFORMATION**

Polish **EXCELLENT**  
Symmetry **VERY GOOD**  
Fluorescence **NONE**  
Inscription(s) **IGI LG757519041**

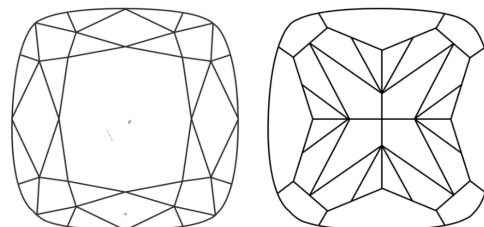
Comments: This Laboratory Grown Diamond was created by Chemical Vapor Deposition (CVD) growth process.  
Indications of post-growth treatment.

**PROPORTIONS**



Sample Image Used

**CLARITY CHARACTERISTICS**



**KEY TO SYMBOLS**

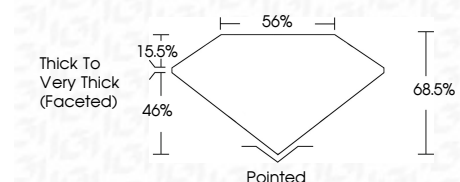
Red symbols indicate internal characteristics.  
Green symbols indicate external characteristics.

**COLOR**

D E F G H I J Faint Very Light Light

**CLARITY**

FL	IF	VS <sup>1-2</sup>	VS <sup>1-2</sup>	SI <sup>1-2</sup>	I <sup>1-3</sup>
Flawless	Internally Flawless	Very Very Slightly Included	Very Slightly Included	Slightly Included	Included



**ADDITIONAL GRADING INFORMATION**

Polish **EXCELLENT**  
Symmetry **VERY GOOD**  
Fluorescence **NONE**  
Inscription(s) **IGI LG757519041**  
Comments: This Laboratory Grown Diamond was created by Chemical Vapor Deposition (CVD) growth process.  
Indications of post-growth treatment.



December 30, 2025  
IGI Report No LG757519041  
**SQUARE CUSHION MODIFIED BRILLIANT**  
5.58 X 5.56 X 3.81 MM  
1.07 CARAT  
FANCY VIVID GREEN  
VS 1  
68.5%  
46%  
15.5%  
Thick to Very Thick (Faceted)  
Pointed  
EXCELLENT  
VERY GOOD  
NONE  
IGI LG757519041  
Comments: This Laboratory Grown Diamond was created by Chemical Vapor Deposition (CVD) growth process.  
Indications of post-growth treatment.