



ELECTRONIC COPY

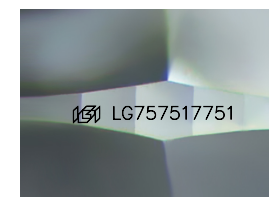
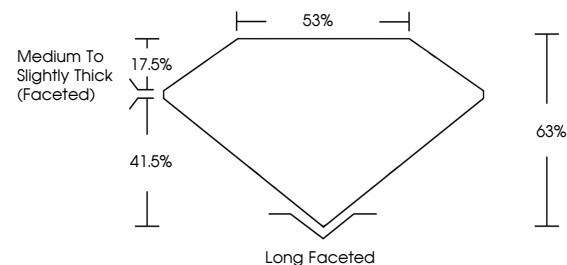
LG757517751
Report verification at igi.org



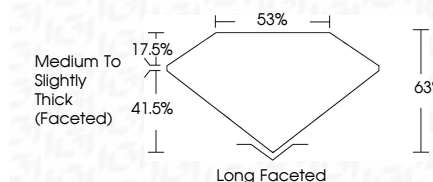
December 16, 2025
IGI Report Number **LG757517751**
Description **LABORATORY GROWN DIAMOND**
Shape and Cutting Style **CUSHION MODIFIED BRILLIANT**
Measurements **11.17 X 8.28 X 5.22 MM**
GRADING RESULTS
Carat Weight **3.64 CARATS**
Color Grade **E**
Clarity Grade **VS 1**

December 16, 2025
IGI Report Number **LG757517751**
Description **LABORATORY GROWN DIAMOND**
Shape and Cutting Style **CUSHION MODIFIED BRILLIANT**
Measurements **11.17 X 8.28 X 5.22 MM**
GRADING RESULTS
Carat Weight **3.64 CARATS**
Color Grade **E**
Clarity Grade **VS 1**

PROPORTIONS



Sample Image Used



ADDITIONAL GRADING INFORMATION

Polish **EXCELLENT**
Symmetry **EXCELLENT**
Fluorescence **NONE**
Inscription(s) **IGI LG757517751**

Comments: This Laboratory Grown Diamond was created by Chemical Vapor Deposition (CVD) growth process. Type IIa

ADDITIONAL GRADING INFORMATION

Polish **EXCELLENT**
Symmetry **EXCELLENT**
Fluorescence **NONE**
Inscription(s) **IGI LG757517751**
Comments: This Laboratory Grown Diamond was created by Chemical Vapor Deposition (CVD) growth process. Type IIa

COLOR

D E F G H I J Faint Very Light Light

CLARITY

FL	IF	VS ¹⁻²	VS ¹⁻²	SI ¹⁻²	I ¹⁻³
Flawless	Internally Flawless	Very Very Slightly Included	Very Slightly Included	Slightly Included	Included



IGI



December 16, 2025
IGI Report No LG757517751
CUSHION MODIFIED BRILLIANT
11.17 X 8.28 X 5.22 MM
3.64 CARATS
E
VS 1
63%
85%
Medium to Slightly Thick (Faceted)
Long Faceted
EXCELLENT
EXCELLENT
NONE
IGI LG757517751
Comments: This Laboratory Grown Diamond was created by Chemical Vapor Deposition (CVD) growth process. Type IIa