



**LABORATORY GROWN DIAMOND REPORT**

December 18, 2025  
 IGI Report Number **LG757517633**  
 Description **LABORATORY GROWN DIAMOND**  
 Shape and Cutting Style **LOZENGE STEP CUT**  
 Measurements **10.21 X 6.52 X 3.15 MM**

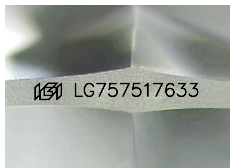
**GRADING RESULTS**

Carat Weight **0.98 CARAT**  
 Color Grade **G**  
 Clarity Grade **VS 1**

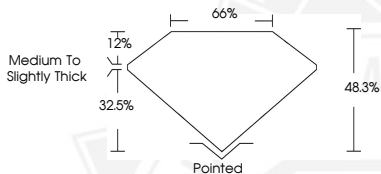
**ADDITIONAL GRADING INFORMATION**

Polish **GOOD**  
 Symmetry **VERY GOOD**  
 Fluorescence **NONE**  
 Inscription(s) **IGI LG757517633**

Comments: This Laboratory Grown Diamond was created by  
 Chemical Vapor Deposition (CVD) growth process.  
 Type IIa



Sample Image Used



December 18, 2025  
 IGI Report Number **LG757517633**  
**LOZENGE STEP CUT**  
**LABORATORY GROWN DIAMOND**  
**10.21 X 6.52 X 3.15 MM**  
 Carat Weight **0.98 CARAT**  
 Color Grade **G**  
 Clarity Grade **VS 1**  
 Polish **GOOD**  
 Symmetry **VERY GOOD**  
 Fluorescence **NONE**  
 Inscription(s) **IGI LG757517633**

Comments: This Laboratory Grown  
 Diamond was created by  
 Chemical Vapor Deposition (CVD)  
 growth process. Type IIa



December 18, 2025  
 IGI Report Number **LG757517633**  
**LOZENGE STEP CUT**  
**LABORATORY GROWN DIAMOND**  
**10.21 X 6.52 X 3.15 MM**  
 Carat Weight **0.98 CARAT**  
 Color Grade **G**  
 Clarity Grade **VS 1**  
 Polish **GOOD**  
 Symmetry **VERY GOOD**  
 Fluorescence **NONE**  
 Inscription(s) **IGI LG757517633**

Comments: This Laboratory Grown  
 Diamond was created by  
 Chemical Vapor Deposition (CVD)  
 growth process. Type IIa



THIS DOCUMENT WAS PRODUCED WITH THE FOLLOWING SECURITY MEASURES: SPECIAL DOCUMENT PAPER, INK SCREENS, WATERMARK, BACKGROUND DESIGNS, HOLOGRAM AND OTHER SECURITY FEATURES NOT LISTED AND DO EXCEED DOCUMENT SECURITY INDUSTRY GUIDELINES.