



**ELECTRONIC COPY**

## LABORATORY GROWN DIAMOND REPORT

|                         |  |
|-------------------------|--|
| December 18, 2025       |  |
| IGI Report Number       | LG757515514                                    |
| Description             | LABORATORY GROWN DIAMOND                       |
| Shape and Cutting Style | CUT CORNERED RECTANGULAR<br>MODIFIED BRILLIANT |
| Measurements            | 7.88 X 4.98 X 3.14 MM                          |

## GRADING RESULTS

|               |            |
|---------------|------------|
| Carat Weight  | 1.03 CARAT |
| Color Grade   | E          |
| Clarity Grade | VS 2       |

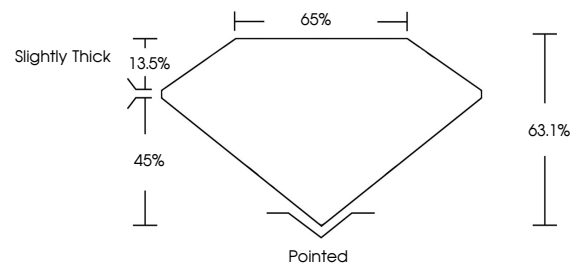
### ADDITIONAL GRADING INFORMATION

|                |   |
|----------------|---|
| Polish         | EXCELLENT   |
| Symmetry       | EXCELLENT   |
| Fluorescence   | NONE  |
| Inscription(s) |  LG757515514 |

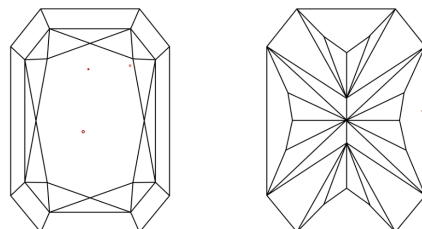
Comments: This Laboratory Grown Diamond was created by Chemical Vapor Deposition (CVD) growth process.  
Type IIa

LG757515514  
Report verification at [lgi.org](https://lgi.org)

## PROPORTIONS

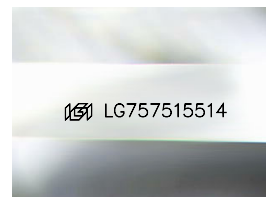


## CLARITY CHARACTERISTICS



### KEY TO SYMBOLS

Red symbols indicate internal characteristics.  
Green symbols indicate external characteristics.



Sample Image Used

## COLOR

D E F G H I J Faint Very Light Light

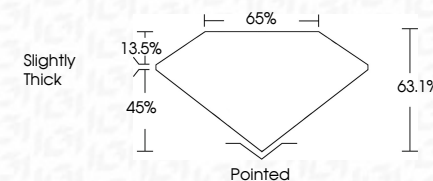
## CLARITY

| FL       | IF                  | VVS <sup>1-2</sup>          | VS <sup>1-2</sup>      | SI <sup>1-2</sup> | I <sup>1-3</sup> |
|----------|---------------------|-----------------------------|------------------------|-------------------|------------------|
| Flawless | Internally Flawless | Very Very Slightly Included | Very Slightly Included | Slightly Included | Included         |

## LABORATORY GROWN DIAMOND REPORT



|                         |   |
|-------------------------|---|
| December 18, 2025       |   |
| IGI Report Number       | LG757515514                                       |
| Description             | LABORATORY GROWN DIAMOND                          |
| Shape and Cutting Style | CUT CORNERED<br>RECTANGULAR MODIFIED<br>BRILLIANT |
| Measurements            | 7.88 X 4.98 X 3.14 MM                             |
| GRADING RESULTS         |   |
| Carat Weight            | 1.03 CARAT  |
| Color Grade             | E   |
| Clarity Grade           | VS 2  |



### ADDITIONAL GRADING INFORMATION

|   |   |
|---|---|
| Polish  | EXCELLENT   |
| Symmetry  | EXCELLENT   |
| Fluorescence  | NONE  |
| Inscription(s)  |  LG757515514 |
| <p>Comments: This Laboratory Grown Diamond was created by Chemical Vapor Deposition (CVD) growth process.</p> <p>Type IIa</p> |   |



© IGI 2020, International Gemological Institute

FD - 10 20

**www.igi.org**



THIS DOCUMENT WAS PRODUCED WITH THE FOLLOWING SECURITY MEASURES: SPECIAL DOCUMENT PAPER, INK SCREENS, WATERMARK, BACKGROUND DESIGNS, HOLOGRAM AND OTHER SECURITY FEATURES NOT LISTED AND DO EXCEED DOCUMENT SECURITY INDUSTRY GUIDELINE

|                                      |                         |            |
|--------------------------------------|-------------------------|------------|
| December 18, 2025                    | GI Report No G737515514 | 1.03 CARAT |
| CU CORNERED RECT, MODIFIED BRILLIANT |                         |            |
| 7.88 X 4.98 X 3.14 MM                |                         |            |
| Carat Weight                         |                         |            |
| Color Grade                          |                         |            |
| Clarity Grade                        | VS 2                    |            |
| Depth                                | 63.1%                   |            |
| Table                                | 65%                     |            |
| Grade                                | Slightly Thick          |            |
| Culet                                | Pointed                 |            |
| Polish                               | EXCELLENT               |            |
| Symmetry                             | EXCELLENT               |            |
| Fluorescence                         | NONE                    |            |
| Annotations                          | See G737515514          |            |

**Comments:**  
This Laboratory Grown Diamond was  
created by Chemical Vapor Deposition  
(CVD) growth process.