



**ELECTRONIC COPY**

LG757515105  
Report verification at igi.org



December 15, 2025

IGI Report Number **LG757515105**

Description **LABORATORY GROWN DIAMOND**

Shape and Cutting Style **EMERALD CUT**

Measurements **10.13 X 7.22 X 4.94 MM**

**GRADING RESULTS**

Carat Weight **3.58 CARATS**

Color Grade **D**

Clarity Grade **VVS 2**

December 15, 2025  
IGI Report Number **LG757515105**  
Description **LABORATORY GROWN DIAMOND**  
Shape and Cutting Style **EMERALD CUT**  
Measurements **10.13 X 7.22 X 4.94 MM**

**GRADING RESULTS**

Carat Weight **3.58 CARATS**

Color Grade **D**

Clarity Grade **VVS 2**

**ADDITIONAL GRADING INFORMATION**

Polish **EXCELLENT**

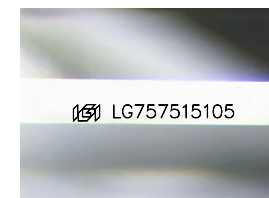
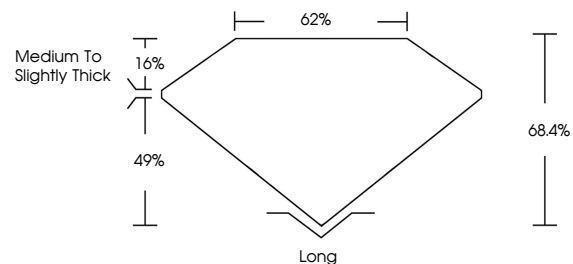
Symmetry **EXCELLENT**

Fluorescence **NONE**

Inscription(s) **IGI LG757515105**

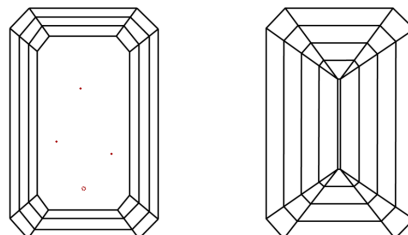
Comments: This Laboratory Grown Diamond was created by Chemical Vapor Deposition (CVD) growth process. Type IIa

**PROPORTIONS**



Sample Image Used

**CLARITY CHARACTERISTICS**



**KEY TO SYMBOLS**

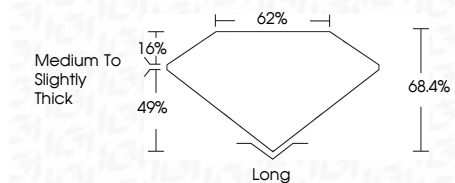
Red symbols indicate internal characteristics.  
Green symbols indicate external characteristics.

**COLOR**

D E F G H I J Faint Very Light Light

**CLARITY**

FL	IF	VVS <sup>1-2</sup>	VS <sup>1-2</sup>	SI <sup>1-2</sup>	I <sup>1-3</sup>
Flawless	Internally Flawless	Very Very Slightly Included	Very Slightly Included	Slightly Included	Included



**ADDITIONAL GRADING INFORMATION**

Polish **EXCELLENT**

Symmetry **EXCELLENT**

Fluorescence **NONE**

Inscription(s) **IGI LG757515105**

Comments: This Laboratory Grown Diamond was created by Chemical Vapor Deposition (CVD) growth process. Type IIa



**IGI**



December 15, 2025  
IGI Report No LG757515105  
EMERALD CUT

10.13 X 7.22 X 4.94 MM

3.58 CARATS  
D  
VVS 2  
68.4%  
62%

Medium to Slightly Thick  
Long  
EXCELLENT  
EXCELLENT  
NONE  
IGI LG757515105

Comments: This Laboratory Grown Diamond was created by Chemical Vapor Deposition (CVD) growth process. Type IIa