



ELECTRONIC COPY

LG757514780
Report verification at igi.org



December 16, 2025
IGI Report Number **LG757514780**
Description **LABORATORY GROWN DIAMOND**
Shape and Cutting Style **RECTANGULAR CUSHION
MODIFIED BRILLIANT**
Measurements **12.53 X 9.02 X 5.54 MM**
GRADING RESULTS
Carat Weight **5.01 CARATS**
Color Grade **E**
Clarity Grade **VS 1**

December 16, 2025
IGI Report Number **LG757514780**
Description **LABORATORY GROWN DIAMOND**
Shape and Cutting Style **RECTANGULAR CUSHION
MODIFIED BRILLIANT**
Measurements **12.53 X 9.02 X 5.54 MM**

GRADING RESULTS

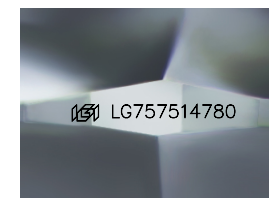
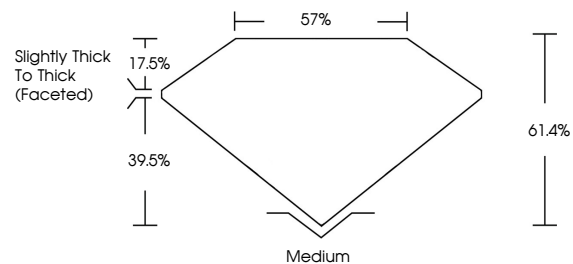
Carat Weight **5.01 CARATS**
Color Grade **E**
Clarity Grade **VS 1**

ADDITIONAL GRADING INFORMATION

Polish **EXCELLENT**
Symmetry **EXCELLENT**
Fluorescence **NONE**
Inscription(s) **IGI LG757514780**

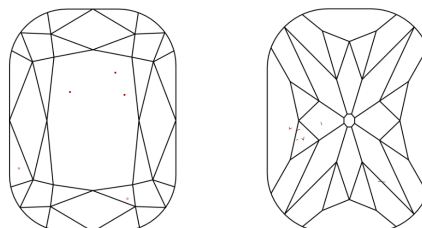
Comments: This Laboratory Grown Diamond was created by Chemical Vapor Deposition (CVD) growth process.
Type IIa

PROPORTIONS



Sample Image Used

CLARITY CHARACTERISTICS



KEY TO SYMBOLS

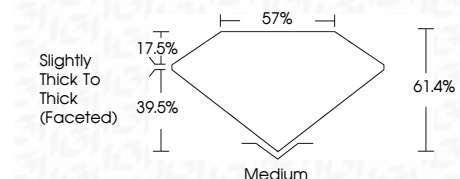
Red symbols indicate internal characteristics.
Green symbols indicate external characteristics.

COLOR

D E F G H I J Faint Very Light Light

CLARITY

| FL | IF | VS ¹⁻² | VS ¹⁻² | SI ¹⁻² | I ¹⁻³ |
|----------|---------------------|-----------------------------|------------------------|-------------------|------------------|
| Flawless | Internally Flawless | Very Very Slightly Included | Very Slightly Included | Slightly Included | Included |



ADDITIONAL GRADING INFORMATION

Polish **EXCELLENT**
Symmetry **EXCELLENT**
Fluorescence **NONE**
Inscription(s) **IGI LG757514780**
Comments: This Laboratory Grown Diamond was created by Chemical Vapor Deposition (CVD) growth process.
Type IIa



December 16, 2025
IGI Report No. LG757514780
RECTANGULAR CUSHION MODIFIED BRILLIANT
12.53 X 9.02 X 5.54 MM
Carat Weight **5.01 CARATS**
Color Grade **E**
Clarity Grade **VS 1**
Depth **61.4%**
Table **39.5%**
Girdle **Slightly Thick To Thick (Faceted)**
Culet **Medium**
Polish **EXCELLENT**
Symmetry **EXCELLENT**
Fluorescence **NONE**
Inscription(s) **IGI LG757514780**
Comments: This Laboratory Grown Diamond was created by Chemical Vapor Deposition (CVD) growth process.
Type IIa