



**ELECTRONIC COPY**

LG757507954  
Report verification at igi.org



December 18, 2025

IGI Report Number **LG757507954**

Description **LABORATORY GROWN DIAMOND**

Shape and Cutting Style **ROUND BRILLIANT**

Measurements **8.75 - 8.79 X 5.48 MM**

**GRADING RESULTS**

Carat Weight **2.58 CARATS**

Color Grade **E**

Clarity Grade **VS 1**

Cut Grade **IDEAL**

December 18, 2025  
IGI Report Number **LG757507954**  
Description **LABORATORY GROWN DIAMOND**  
Shape and Cutting Style **ROUND BRILLIANT**  
Measurements **8.75 - 8.79 X 5.48 MM**

**GRADING RESULTS**

Carat Weight **2.58 CARATS**

Color Grade **E**

Clarity Grade **VS 1**

Cut Grade **IDEAL**

**ADDITIONAL GRADING INFORMATION**

Polish **EXCELLENT**

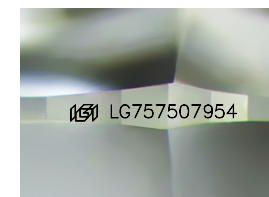
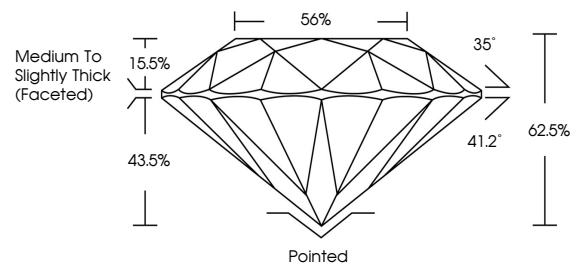
Symmetry **EXCELLENT**

Fluorescence **NONE**

Inscription(s) **IGI LG757507954**

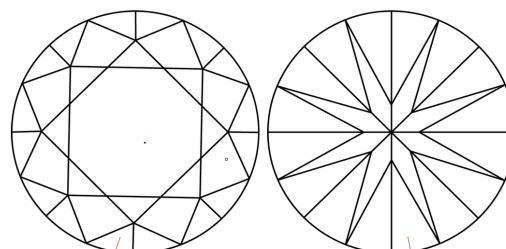
Comments: This Laboratory Grown Diamond was created by Chemical Vapor Deposition (CVD) growth process.  
Type IIa

**PROPORTIONS**



Sample Image Used

**CLARITY CHARACTERISTICS**



**KEY TO SYMBOLS**

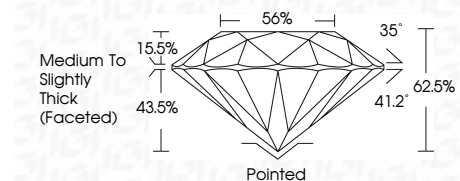
Red symbols indicate internal characteristics.  
Green symbols indicate external characteristics.

**COLOR**

D E F G H I J Faint Very Light Light

**CLARITY**

| FL       | IF                  | VS <sup>1-2</sup>           | VS <sup>1-2</sup>      | SI <sup>1-2</sup> | I <sup>1-3</sup> |
|----------|---------------------|-----------------------------|------------------------|-------------------|------------------|
| Flawless | Internally Flawless | Very Very Slightly Included | Very Slightly Included | Slightly Included | Included         |



**ADDITIONAL GRADING INFORMATION**

Polish **EXCELLENT**

Symmetry **EXCELLENT**

Fluorescence **NONE**

Inscription(s) **IGI LG757507954**

Comments: This Laboratory Grown Diamond was created by Chemical Vapor Deposition (CVD) growth process.  
Type IIa



**IGI**



|                   |                           |              |             |               |           |       |       |                                    |         |           |           |              |                 |
|-------------------|---------------------------|--------------|-------------|---------------|-----------|-------|-------|------------------------------------|---------|-----------|-----------|--------------|-----------------|
| December 18, 2025 | IGI Report No LG757507954 | 2.58 CARATS  | E           | VS 1          | IDEAL     | 62.5% | 56%   | Medium To Slightly Thick (Faceted) | Pointed | EXCELLENT | EXCELLENT | NONE         | IGI LG757507954 |
| ROUND BRILLIANT   | 8.75 - 8.79 X 5.48 MM     | Carat Weight | Color Grade | Clarity Grade | Cut Grade | Depth | Table | Girdle                             | Culet   | Polish    | Symmetry  | Fluorescence | Inscription(s)  |

Comments: This Laboratory Grown Diamond was created by Chemical Vapor Deposition (CVD) growth process.  
Type IIa