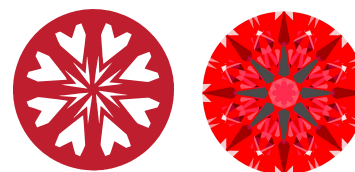




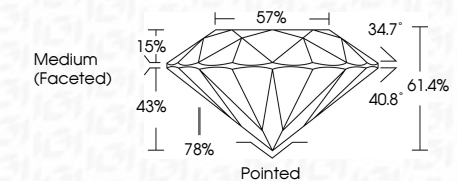
Light Performance Grade: Exceptional



Structured Light Environment Representation



December 13, 2025 IGI Report Number LG757507637 Description LABORATORY GROWN DIAMOND Shape and Cutting Style ROUND BRILLIANT Measurements 9.39 - 9.44 X 5.78 MM GRADING RESULTS Carat Weight 3.15 CARATS Color Grade D Clarity Grade VVS 2 Cut Grade IDEAL



ADDITIONAL GRADING INFORMATION Polish EXCELLENT Symmetry EXCELLENT Fluorescence NONE Inscription(s) IGI LG757507637 Comments: HEARTS & ARROWS This Laboratory Grown Diamond was created by Chemical Vapor Deposition (CVD) growth process. Type IIa

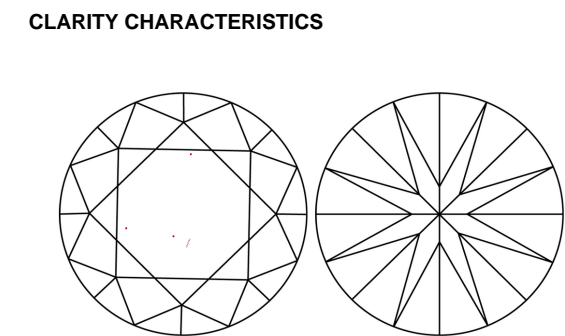
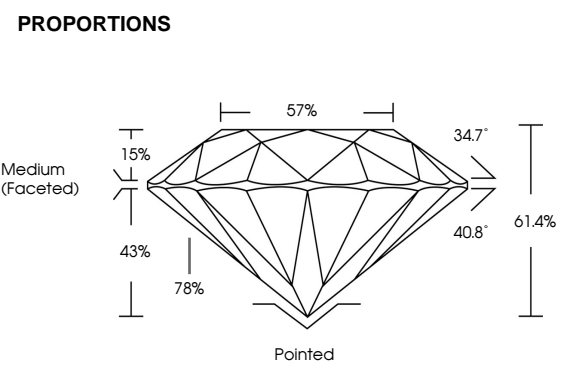
ELECTRONIC COPY LABORATORY GROWN DIAMOND REPORT

December 13, 2025 IGI Report Number LG757507637 Description LABORATORY GROWN DIAMOND Shape and Cutting Style ROUND BRILLIANT Measurements 9.39 - 9.44 x 5.78 mm

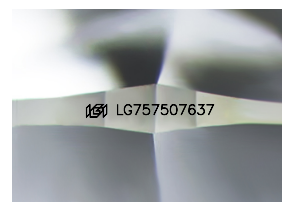
GRADING RESULTS Carat Weight 3.15 CARATS Color Grade D Clarity Grade VVS 2 Cut Grade IDEAL

ADDITIONAL GRADING INFORMATION Polish EXCELLENT Symmetry EXCELLENT Fluorescence NONE Inscription(s) IGI LG757507637

Comments: HEARTS & ARROWS This Laboratory Grown Diamond was created by Chemical Vapor Deposition (CVD) growth process. Type IIa



KEY TO SYMBOLS Red symbols indicate internal characteristics. Green symbols indicate external characteristics.



Sample Image Used



Summary table of report details: December 13, 2025, IGI Report No. LG757507637, ROUND BRILLIANT, 9.39 - 9.44 X 5.78 MM, 3.15 CARATS, D, VVS 2, IDEAL, 61.4%, 57%, Medium (Faceted), Pointed, EXCELLENT, EXCELLENT, NONE, IGI LG757507637

Comments: HEARTS & ARROWS This Laboratory Grown Diamond was created by Chemical Vapor Deposition (CVD) growth process. Type IIa