



ELECTRONIC COPY

LG757507235
Report verification at igi.org



December 19, 2025

IGI Report Number **LG757507235**

Description **LABORATORY GROWN DIAMOND**

Shape and Cutting Style **CUT CORNERED
RECTANGULAR MODIFIED
BRILLIANT**

Measurements **10.14 X 6.94 X 4.70 MM**

GRADING RESULTS

Carat Weight **3.13 CARATS**

Color Grade **FANCY VIVID PINK**

Clarity Grade **VS 1**

LABORATORY GROWN DIAMOND REPORT

December 19, 2025

IGI Report Number **LG757507235**

Description **LABORATORY GROWN DIAMOND**

Shape and Cutting Style **CUT CORNERED RECTANGULAR
MODIFIED BRILLIANT**

Measurements **10.14 X 6.94 X 4.70 MM**

GRADING RESULTS

Carat Weight **3.13 CARATS**

Color Grade **FANCY VIVID PINK**

Clarity Grade **VS 1**

ADDITIONAL GRADING INFORMATION

Polish **EXCELLENT**

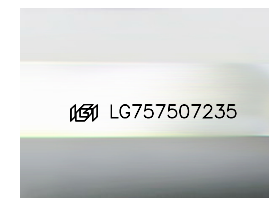
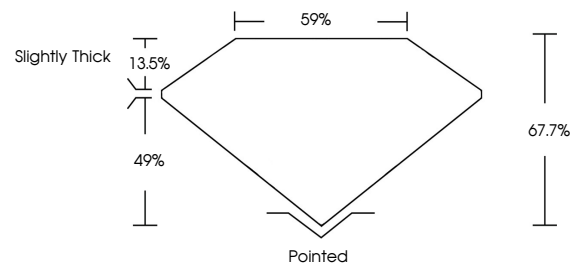
Symmetry **EXCELLENT**

Fluorescence **STRONG**

Inscription(s) **IGI LG757507235**

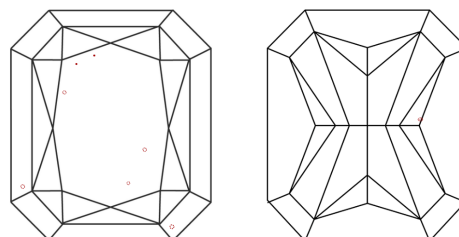
Comments: This Laboratory Grown Diamond was created by Chemical Vapor Deposition (CVD) growth process. Indications of post-growth treatment.

PROPORTIONS



Sample Image Used

CLARITY CHARACTERISTICS



KEY TO SYMBOLS

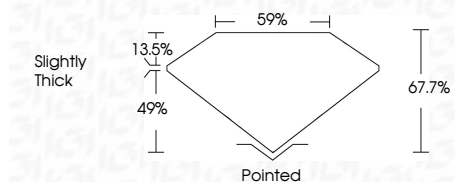
Red symbols indicate internal characteristics.
Green symbols indicate external characteristics.

COLOR

D E F G H I J Faint Very Light Light

CLARITY

FL	IF	VS ¹⁻²	VS ¹⁻²	SI ¹⁻²	I ¹⁻³
Flawless	Internally Flawless	Very Very Slightly Included	Very Slightly Included	Slightly Included	Included



ADDITIONAL GRADING INFORMATION

Polish **EXCELLENT**

Symmetry **EXCELLENT**

Fluorescence **STRONG**

Inscription(s) **IGI LG757507235**

Comments: This Laboratory Grown Diamond was created by Chemical Vapor Deposition (CVD) growth process. Indications of post-growth treatment.



IGI



December 19, 2025
IGI Report No LG757507235
CUT CORNERED RECT. MODIFIED BRILLIANT
10.14 X 6.94 X 4.70 MM
3.13 CARATS
FANCY VIVID PINK
VS 1
67.7%
59%
Slightly Thick
Pointed
EXCELLENT
EXCELLENT
STRONG
IGI LG757507235
Comments: This Laboratory Grown Diamond was created by Chemical Vapor Deposition (CVD) growth process. Indications of post-growth treatment.