



**ELECTRONIC COPY**

LG757507229  
Report verification at igi.org



December 22, 2025

IGI Report Number **LG757507229**

Description **LABORATORY GROWN DIAMOND**

Shape and Cutting Style **CUT CORNERED  
RECTANGULAR MODIFIED  
BRILLIANT**

Measurements **7.25 X 4.92 X 3.57 MM**

**GRADING RESULTS**

Carat Weight **1.19 CARAT**

Color Grade **FANCY VIVID PINK**

Clarity Grade **VVS 2**

December 22, 2025

IGI Report Number **LG757507229**

Description **LABORATORY GROWN DIAMOND**

Shape and Cutting Style **CUT CORNERED RECTANGULAR  
MODIFIED BRILLIANT**

Measurements **7.25 X 4.92 X 3.57 MM**

**GRADING RESULTS**

Carat Weight **1.19 CARAT**

Color Grade **FANCY VIVID PINK**

Clarity Grade **VVS 2**

**ADDITIONAL GRADING INFORMATION**

Polish **VERY GOOD**

Symmetry **VERY GOOD**

Fluorescence **SLIGHT**

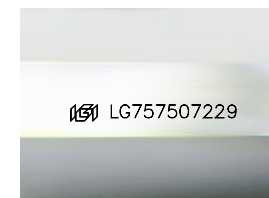
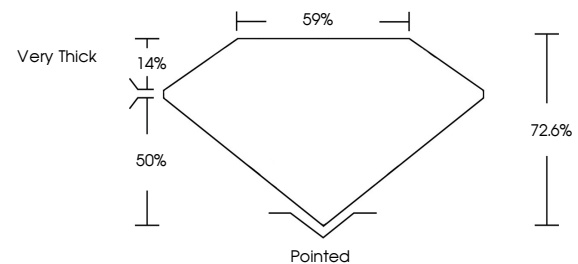
Inscription(s) **IGI LG757507229**

Comments: This Laboratory Grown Diamond was created by Chemical Vapor Deposition (CVD) growth process.

Indications of post-growth treatment.

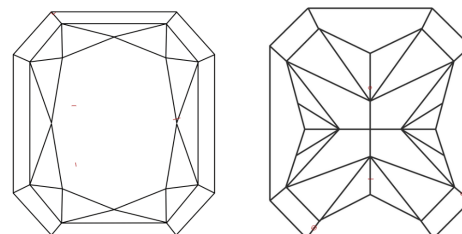
Secondary color: Brown

**PROPORTIONS**



Sample Image Used

**CLARITY CHARACTERISTICS**



**KEY TO SYMBOLS**

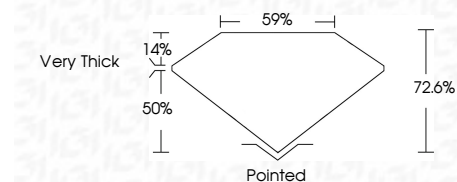
Red symbols indicate internal characteristics.  
Green symbols indicate external characteristics.

**COLOR**

D E F G H I J Faint Very Light Light

**CLARITY**

| FL       | IF                  | VVS <sup>1-2</sup>          | VS <sup>1-2</sup>      | SI <sup>1-2</sup> | I <sup>1-3</sup> |
|----------|---------------------|-----------------------------|------------------------|-------------------|------------------|
| Flawless | Internally Flawless | Very Very Slightly Included | Very Slightly Included | Slightly Included | Included         |



**ADDITIONAL GRADING INFORMATION**

Polish **VERY GOOD**

Symmetry **VERY GOOD**

Fluorescence **SLIGHT**

Inscription(s) **IGI LG757507229**

Comments: This Laboratory Grown Diamond was created by Chemical Vapor Deposition (CVD) growth process.

Indications of post-growth treatment.

Secondary color: Brown



**IGI**



December 22, 2025  
IGI Report No LG757507229  
CUT CORNERED RECT. MODIFIED BRILLIANT  
7.25 X 4.92 X 3.57 MM  
1.19 CARAT  
FANCY VIVID PINK  
VVS 2  
72.6%  
59%  
Very Thick  
Pointed  
Polish VERY GOOD  
Symmetry VERY GOOD  
Fluorescence SLIGHT  
Inscription(s) IGI LG757507229  
Comments: This Laboratory Grown Diamond was created by Chemical Vapor Deposition (CVD) growth process. Indications of post-growth treatment. Secondary color: Brown